

# NKBA STUDENT COMPETITION 2020

CONCEPT STATEMENT:

COMFORTABLE AND CONTEMPORARY CONGREGATING

CONCEPT:

ANNA AND DREW NEEDED AN UPDATED CONTEMPORARY KITCHEN THAT WOULD WORK TO SERVE AS A COMFORTABLE GATHERING AREA FOR THEIR FAMILY, FRIENDS, AND CATS.

THROUGH CUSTOMIZING THE KITCHEN TO THEIR NEEDS, THEY WILL HAVE A KITCHEN THAT WILL TAKE INTO ACCOUNT THEIR STORAGE AND SPACE PLANNING NEEDS, SUCH AS A DESK AREA FOR TECHNOLOGY, CABINETRY WITH PULL-OUTS, AND EASY RECYCLING ACCESS.

FRIENDS AND FAMILY, FURRY OR OTHERWISE, WILL NOT BE LEFT BEHIND, WITH PLENTY OF STORAGE IN THE FORM OF BENCH SEATING FOR TOYS, MOVEABLE SEATING FOR WHEELCHAIR ACCESSIBILITY, AND AN EATING/ FOOD STORAGE AREA FOR THE CATS.

SUSTAINABILITY AND EARTH- CONSCIOUSNESS IS IMPORTANT. A PLANT GROWING, PREPARATION, AND DISPLAY AREA HAVE BEEN INCORPORATED, COUNTERTOPS WILL BE DEKTON TO LAST LONGER THAN STANDARD COUNTERTOPS, CABINETS WILL BE A MIXTURE OF LAMINATE, MELAMINE, AND WOOD. LOW OR NO VOC PAINT IS SPECIFIED. LED LIGHTING WILL BE USED, LASTLY, TRANSOM WINDOWS ABOVE AND BELOW CABINETS ASSIST IN NATURAL DAYLIGHTING.

KEEPING IN MIND THE COUPLE IS AGING, FINISHES HAVE BEEN CHOSEN FOR EASY VISIBILITY IN CONTRAST, ACCURATE LIGHTING WILL BE INSTALLED, NO SLIP FLOORING AND MINIMAL EFFORT FIXTURES AND CABINETRY WILL MAKE THIS KITCHEN EASY TO USE FOR ALL.

TABLE OF CONTENTS:

CS	COVERSHEET
AOI	SCHEDULES-CABINET, APPLIANCE, PLUMBING
AI	FLOOR PLAN
A2	MECHANICAL ENGINEERING PLAN
A3	NORTH ELEVATION
A4	WEST AND ISLAND ELEVATION

PERSPECTIVE 1

PERSPECTIVE 2

BIRDS-EYE VIEW

PRODUCT OVERVIEW PAGES

NOTE: APPLIANCE SPECIFICATION SHEET IS ON  
AOI APPLIANCE SCHEDULE

ALL DIMENSIONS AND SIZE DESIGNATIONS GIVEN ARE SUBJECT TO VERIFICATION ON JOB SITE & ADJUSTMENT TO FIT JOB CONDITIONS	<div><div>NKBA</div><div>The Finest Professionals in the Kitchen &amp; Bath Industry</div><div>National Kitchen &amp; Bath AssociationSM</div></div>	DESIGN PLANS ARE PROVIDED FOR THE FAIR USE BY THE CLIENT OR HIS AGENT IN COMPLETING THE PROJECT AS LISTED WITHIN THIS CONTRACT. DESIGN PLANS REMAIN THE PORPERTY OF THIS FIRM AND CAN NOT BE USED OR REUSED WITHOUT PERMISSION.	DESIGNED FOR  NKBA COMPETITION	BY  K4056555917		DATE	BY	SCALE	DWG NO
					DWN	08012020			
					REV				
								N/A	CS

CABINET SPECIFICATIONS				
CABINET NUMBER	CABINET NOMENCLATURE	MANUFACTURER	MODEL #	NOTES
1	DDO396	RTA WOOD CABINETS	ML 19-TFP96	FINISHING END FOR PANTRY CABINET
2	WC2196	RTA WOOD CABINETS	ML19-WP1896B	ML19 IS MATRIX GREYSTONE ASSEMBLED CABINETS. EASY PUSH TO OPEN.
3	DDO396	RTA WOOD CABINETS	ML 19-TFP96	FINISHING END FOR PANTRY CABINET
4	BC363421-L5	RTA WOOD CABINETS	ML 19-L536	WITH LAZY SUSAN INSERT
5	B273424	RTA WOOD CABINETS	ML 19- B27B-POS2	WITH 2 ROLL OUTS
6	B3O3424	RTA WOOD CABINETS	ML 19-B3OB-POS2	WITH 2 ROLL OUTS
7	BFO23424	RTA WOOD CABINETS	ML19-BF3	BASE FILLER CUT TO FIT
8	SCO63424	RTA WOOD CABINETS	ML 19-BSP6	SPICE CABINET
9	WSC244212	RTA WOOD CABINETS	ML 19- SCW2442	SQUARE CORNER CABINET WITH BIFOLD DOORS
10	W274212	RTA WOOD CABINETS	ML 19-W2742B	
11	W3O4212	RTA WOOD CABINETS	ML 19-W3O42B	
12	WFO34212	RTA WOOD CABINETS	ML 19- WF33O	WALL FILLER CUT TO FIT
13	WO64212	RTA WOOD CABINETS	ML 19-W542	KNICK KNACK OPEN SHELVING
14	B3O3424	RTA WOOD CABINETS	ML 19-B3OB-POS2	WITH 2 ROLL OUTS
15	MB3O3424	RTA WOOD CABINETS	ML 19-MB3O	MICROWAVE CUTOUT
16	RPO39624	RTA WOOD CABINETS	ML 19- REF396	REF. PANEL
17	RPO39624	RTA WOOD CABINETS	ML 19- REF396	REF. PANEL
18	W3O4212	RTA WOOD CABINETS	ML 19-W3O42B	
19	BP2434	RTA WOOD CABINETS	ML 19-BFP	ISLAND PANEL
20	W3O4212	RTA WOOD CABINETS	ML 19-W3O42B	
21	W362412	RTA WOOD CABINETS	ML 19- W3624	ABOVE REFRIDGERATOR; 2" FILLER BELOW CABINET TO MAKE FLUSH AND PUSH FORWARD TO BE FLUSH WITH REF.
22	B183424	RTA WOOD CABINETS	ML 19-BWBK1B	TRASH WITH TWO BINS ( ONE FOR RECYCLING)
23	SB363424	RTA WOOD CABINETS	ML 19-SB36	SINK BASE CABINET WITH 2 FRONT DRAWERS
24	BFO33424	RTA WOOD CABINETS	ML 19- DWR3	3" FILLER ON SIDE OF DISHWASHER FOR FINISHING

1 CABINET SCHEDULE  
SCALE: N/ A

APPLIANCE SCHEDULE								
IDENTIFYING LETTER	ITEM	MANUFACTURER	MODEL #	VOLTAGE	WIDTH	FINISH	FUEL	NOTES
A	STEAM RANGE	DACOR	DOP36M86D	240	36"	STAINLESS STEEL	GAS AND ELECTRIC	WITH STEAM OVEN ASSIST
B	VENT HOOD	COPPER SINKS ONLINE	CHOOIO	120	36"	MATTE COPPER	ELECTRIC	430 CFM
C	MICROWAVE DRAWER	DACOR	RNMD3O	120	30 "	STAINLESS STEEL	ELECTRIC	17" AFF
D	REFRIDGERATOR	DACOR	DRF36C1OOSR	115	35.75"	STAINLESS STEEL	ELECTRIC	USE 120 V PLUG, 3 PRONG
E	DISHWASHER	DACOR	DDW24M999U	120	24"	STAINLESS STEEL	ELECTRIC	

2 APPLIANCE SCHEDULE  
SCALE: N/ A

PLUMBING FIXTURE SCHEDULE					
IDENTIFYING LETTER	ITEM	MANUFACTURER	MODEL #	FINISH	NOTES
F	SINK	COPPER SINKS ONLINE	CK75O1M35-FF	MATTE COPPER	FARMHOUSE SINK
G	FAUCET	KOHLER	K-72218-3RD	VIBRANT OMBRE ROSE GOLD/ POLISHED NICKEL	TOUCHLESS WITH PULL DOWN SPOUT
H	AUTOMATIC SOAP DISPENSER	SIMPLE HUMAN	ST1O46	ROSE GOLD	CHARGEABLE, NO PLUG IN.

3 PLUMBING FIXTURES SCHEDULE  
SCALE: N/ A

ALL DIMENSIONS AND SIZE DESIGNATIONS GIVEN ARE SUBJECT TO VERIFICATION ON JOB SITE & ADJUSTMENT TO FIT FIT JOB CONDITIONS



DESIGN PLANS ARE PROVIDED FOR THE FAIR USE BY THE CLIENT OR HIS AGENT IN COMPLETING THE PROJECT AS LISTED WITHIN THIS CONTRACT. DESIGN PLANS REMAIN THE PORPERTY OF THIS FIRM AND CAN NOT BE USED OR REUSED WITHOUT PERMISSION.

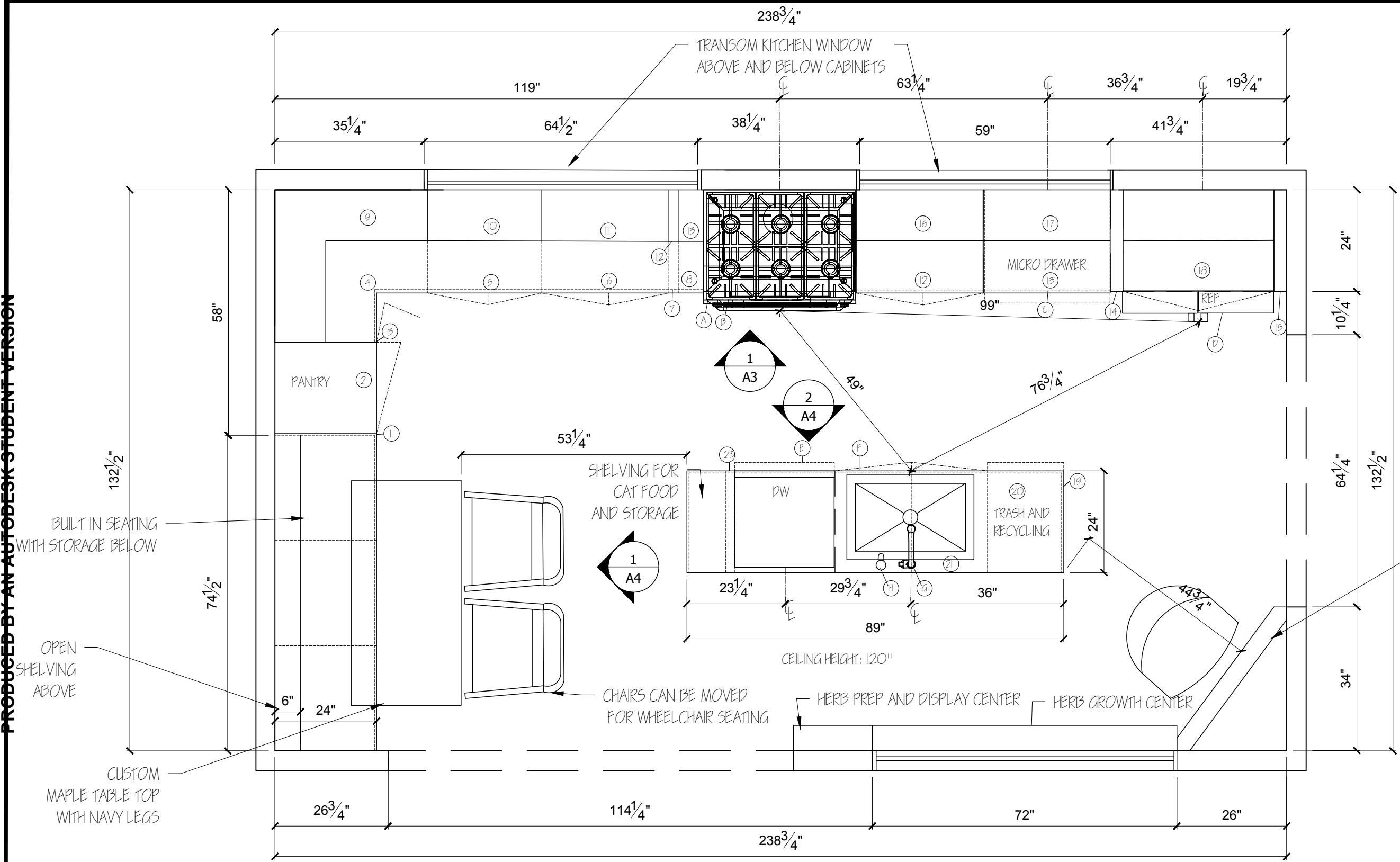
DESIGNED FOR  
  
NKBA COMPETITION

BY  
  
K4056555917

	DATE	BY	SCALE	DWG NO
DWN	10/08/2020		N/A	A01
REV				

PRODUCED BY AN AUTODESK STUDENT VERSION

PRODUCED BY AN AUTODESK STUDENT VERSION



- NOTES:
- COUNTERTOP FRONTAGE: 236"
  - SHELF / BASE / DRAWER FRONTAGE WITHIN 72" CENTERLINE OF SINK: 762.5"
  - ALL COUNTERTOPS TO BE ROUNDED.
  - ALL RECEPTACLES TO BE AFCI.
  - TRANSOM KITCHEN WINDOWS ARE INOPERABLE.
  - SEE PRODUCT PHOTO OVERVIEW FOR FINISHES.

1 FLOOR PLAN  
SCALE: 1/2" = 1'-0"

N

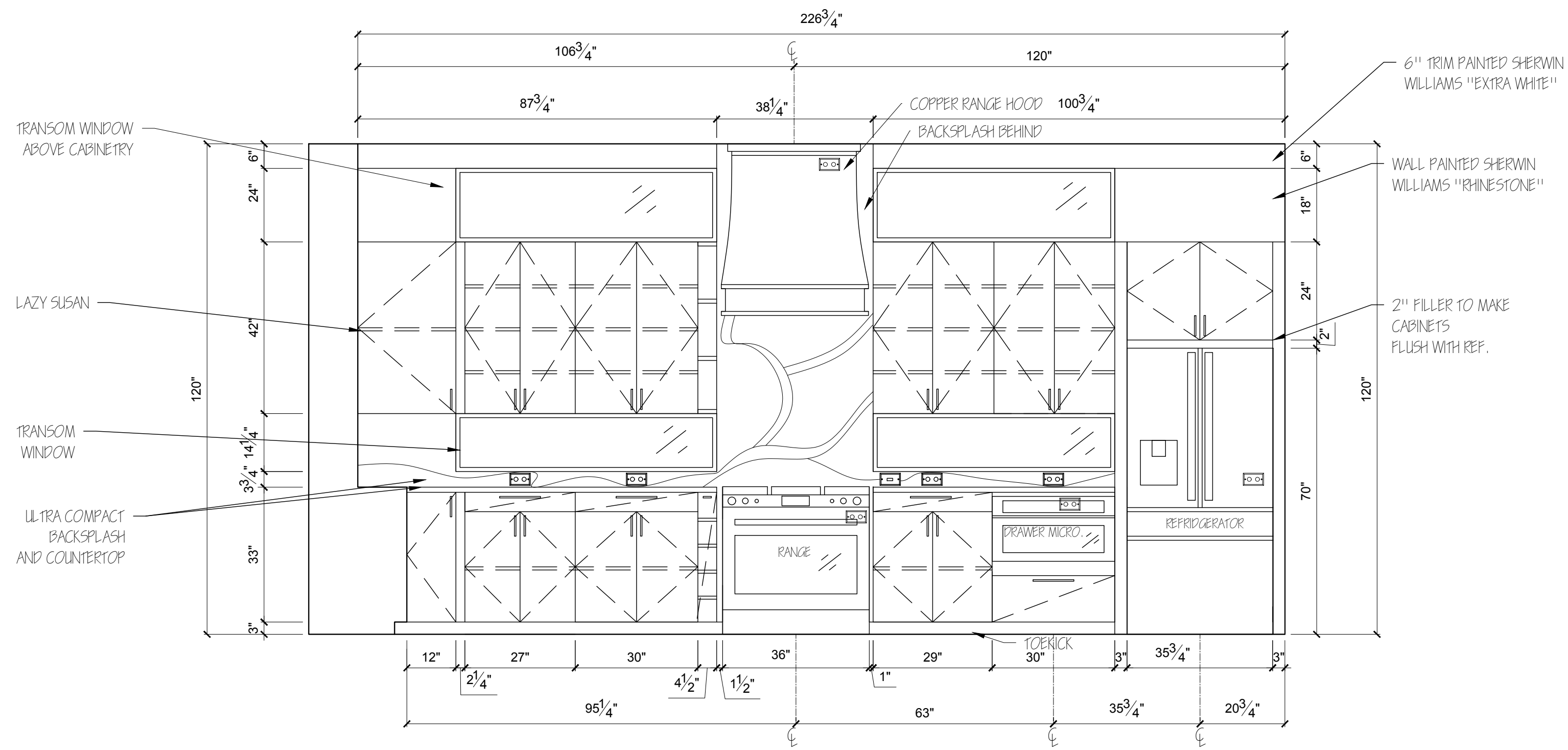
ALL DIMENSIONS AND SIZE DESIGNATIONS GIVEN ARE SUBJECT TO VERIFICATION ON JOB SITE & ADJUSTMENT TO FIT JOB CONDITIONS	<b>NKBA</b> The Finest Professionals in the Kitchen & Bath Industry National Kitchen & Bath Association <sup>SM</sup>	DESIGN PLANS ARE PROVIDED FOR THE FAIR USE BY THE CLIENT OR HIS AGENT IN COMPLETING THE PROJECT AS LISTED WITHIN THIS CONTRACT. DESIGN PLANS REMAIN THE PROPERTY OF THIS FIRM AND CAN NOT BE USED OR REUSED WITHOUT PERMISSION.	DESIGNED FOR  NKBA COMPETITION	BY  K4056555917	DATE	BY	SCALE	DWG NO
					DWN 108012020		1/2"= 1'0"	A1
					REV			



- ALL RECEPTACLES TO BE AFCI.
- REFER TO APPLIANCE SCHEDULE ON AOI FOR MORE INFORMATION.
- CEILING TO BE PAINTED SHERWIN WILLIAMS "EXTRA WHITE",
- SWITCHES TO BE INSTALLED AT 42" AFF (CENTERLINE) UNLESS OTHERWISE SPECIFIED.
- OUTLETS INSTALLED AT 38" AFF (CENTERLINE) UNLESS OTHERWISE SPECIFIED.

	ARC-FAULT CIRCUIT INTERRUPTER 38" AFF UNLESS OTHERWISE NOTED
	OUTLET-DATA AND CABLE
	TELEPHONE
	ONE WAY LIGHT SWITCH
	THREE WAY LIGHT SWITCH
	MICROWAVE, DACOR, RNMD30, 120V, 31" AFF
	DISPOSAL, MOEN, GX100C, 115V, 24" AFF
	DISHWASHER, DACOR, DDW24M999U, 120V, 32" AFF
	RANGE, DACOR, DOP36MB6D, 240V, 28" AFF
	HOOD, COPPER SINKS ONLINE, CHOOIO, 120V, 114" AFF
	REFRIGERATOR, DACOR, DRF36C100SR, 115V
	SMOKE DETECTOR, NEST PROTECT, N/ A, 120V
	CIRCUIT LINES
	5" SQUARE COPPER DOWNLIGHT: QTY BIC BOZ
	UNDER CABINET LIGHT, LUMENS.COM, UL1546001, 24V
	TRANSFORMER, LUMENS.COM, UL1303041, PLUG INTO OTHER MIC
	7.8" D. PENDANT: QTY CLUB BI- COLOR IN COPPER/ BLUE
	15.7" D. PENDANT: QTY MOMA IN COPPER/ BLUE

	DATE	BY	SCALED	DWG NO
DWN	08012020		1/2"= 1'0"	A2
REV				



1 NORTH ELEVATION  
SCALE: 1/2" = 1'-0"

ALL DIMENSIONS AND SIZE DESIGNATIONS GIVEN ARE SUBJECT TO VERIFICATION ON JOB SITE & ADJUSTMENT TO FIT FIT JOB CONDITIONS



DESIGN PLANS ARE PROVIDED FOR THE FAIR USE BY THE CLIENT OR HIS AGENT IN COMPLETING THE PROJECT AS LISTED WITHIN THIS CONTRACT. DESIGN PLANS REMAIN THE PORPERTY OF THIS FIRM AND CAN NOT BE USED OR REUSED WITHOUT PERMISSION.

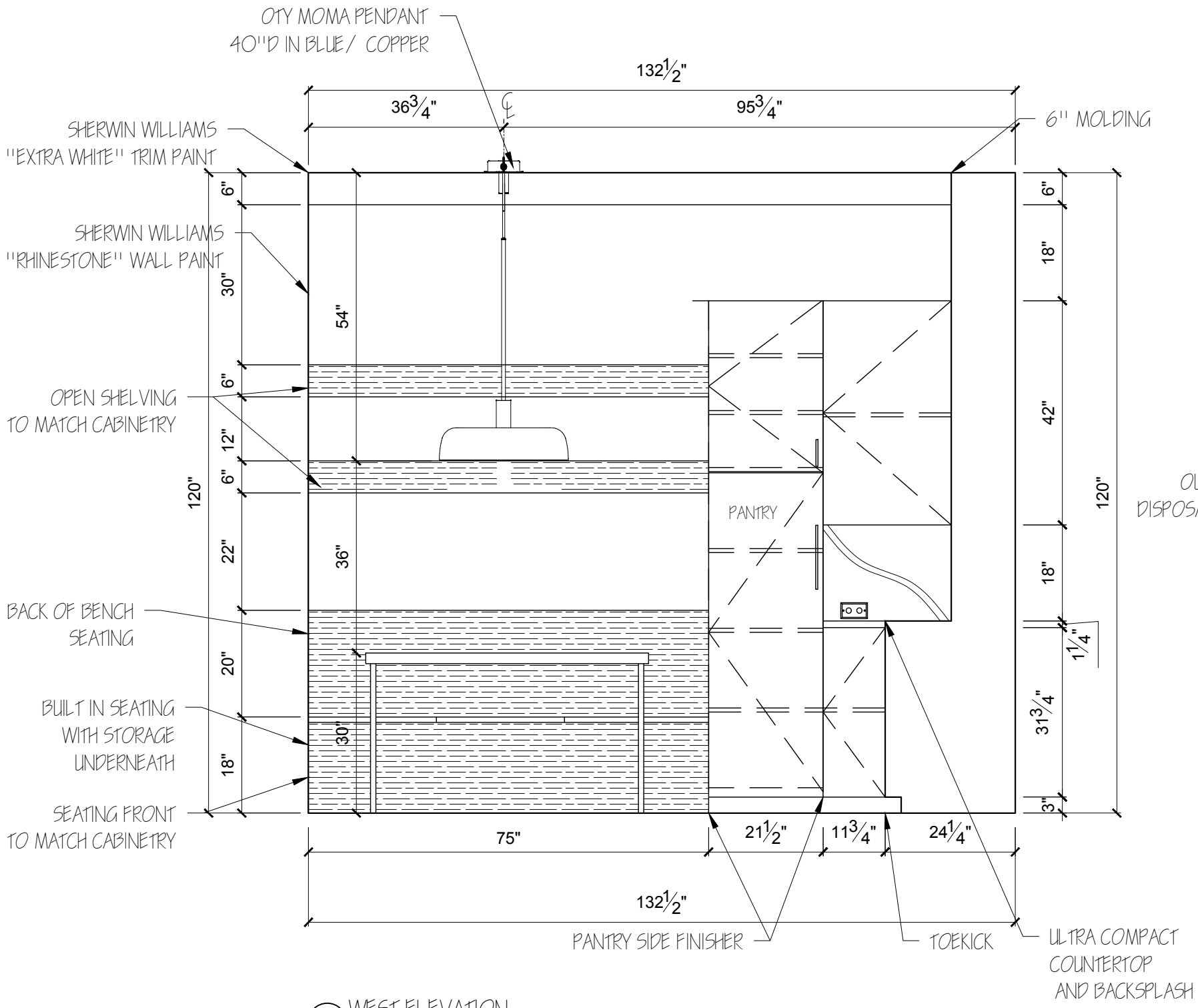
DESIGNED FOR  
NKBA COMPETITION

BY  
K4056555917

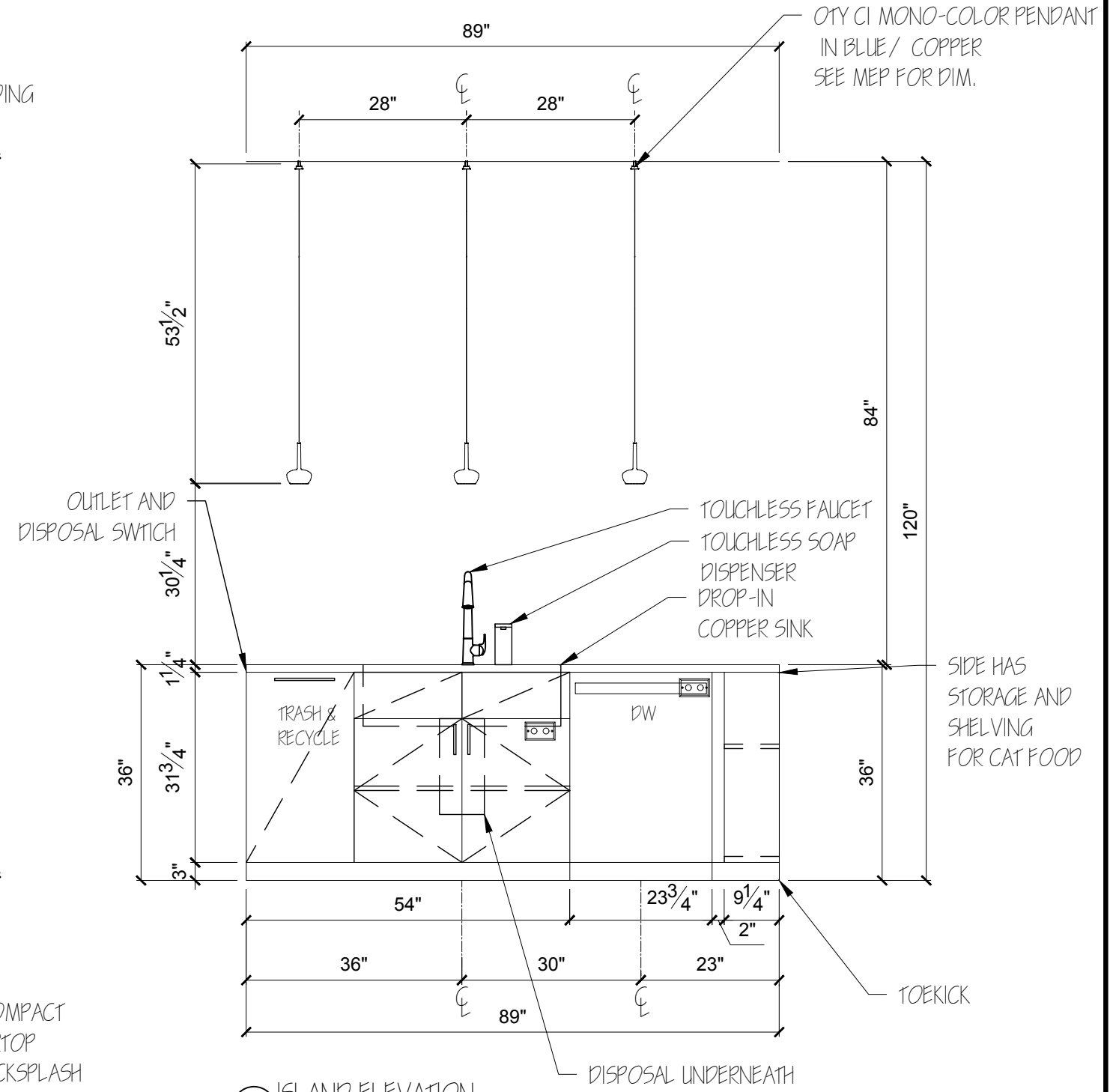
	DATE	BY	SCALE	DWG NO
DWN	10/8/2020		1/2"= 1'0"	A3
REV				

PRODUCED BY AN AUTODESK STUDENT VERSION

PRODUCED BY AN AUTODESK STUDENT VERSION



1 WEST ELEVATION  
SCALE: 1/2" = 1'-0"



2 ISLAND ELEVATION  
SCALE: 1/2" = 1'-0"

ALL DIMENSIONS AND SIZE  
DESIGNATIONS GIVEN ARE  
SUBJECT TO VERIFICATION  
ON JOB SITE & ADJUSTMENT  
TO FIT FIT JOB CONDITIONS



DESIGN PLANS ARE PROVIDED FOR THE FAIR USE BY THE  
CLIENT OR HIS AGENT IN COMPLETING THE PROJECT AS  
LISTED WITHIN THIS CONTRACT. DESIGN PLANS REMAIN  
THE PORPERTY OF THIS FIRM AND CAN NOT BE USED OR  
REUSED WITHOUT PERMISSION.

DESIGNED FOR  
  
NKBA COMPETITION

BY  
  
K4056555917

	DATE	BY	SCALE	DWG NO
DWN	08012020			
REV			1/2"= 1'0"	A4