

RESIDENTIAL SELECTIONS

By Kali Steele
Residential 2313
25 August 2020
Prof. Jackie Barry

Table of Contents:

□ 1

Concept:

- Concept Statement
- Material Scheme Investigation Board
- Sustainability Plan

□ 2

Fixtures, Furnishings, and Equipment

- | | |
|------------|-----------------|
| -Overall | -Public Spaces |
| -Bathrooms | -Private Spaces |
| -Kitchens | -Outdoor Area |

Table of Contents:

□ 3

Final Floor Plan

□ 4

Reflected Ceiling Plan

- Lights/ Electrical Considerations
- Ceiling Details
- RCP Plan

Table of Contents:

05

Elevations

- Kitchen and Surrounding Areas
- In- Law ADA Accessible Suite
- Exterior Living Area

06

Exterior Site and Landscape Presentations

- Exterior Site Plan
- Exterior FF&E
- Outdoor Materials
- Outdoor Plants
- Outdoor Edible Garden in Raised Beds

01

Concept and Concept Statement

Concept Statement:

A HOLISTIC EXPRESSWAY TO AN EFFICIENT HOUSEHOLD

Holistic- Looking at all parts as a piece of the whole

Efficient: Working in a well-organized and competent way

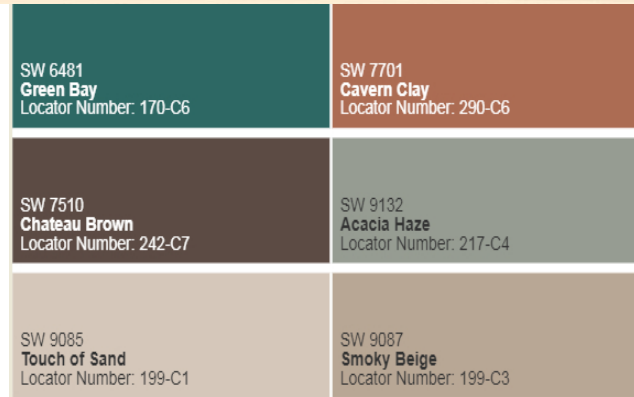
Design Concept: A home infused with the **appreciation of nature** is the perfect way to encapsulate the Boseman Residence. **Their enthusiasm for gardening** is paramount to their business and life, and will be showcased throughout the home. With the need to accommodate multiple generations, the home will feature private, work, and creative spaces. The house will have materials and building systems that shows intention to sustainability, while providing the clients with both **the benefit of healthier living** as well as a **practical interior and exterior**. **A holistic design approach will be used to give consistency throughout the entire home. A holistic atmosphere also receives the benefit of being efficient.** This will be seen in terms of sustainability as well as the physical house spacial planning, and how the end user moves through the space and interacts with family members. The home will feel connected by the spaces themselves having reasonable flow and natural wayfinding, enhancing the feel of the house being holistic. The home's **layout** will make it feel as if everyone is connected, while **the naturistic materials and outdoor views** will lead one to feel connected to the outdoors as well.

Note: 3 Schemes were presented, each nodding to a different design style, and while each approach is a bit different, each conveys this concept.



Material Scheme Investigation – Strong Shapes and Sustainable Substance

- Focusing on the **material aspect** of the concept, this scheme features an Arts and Crafts style influence, with modern updates. This greatly aligns with the concept, as the Arts and Crafts movement emphasized the beauty in materials.
- This holistic approach would feature **built-ins** of the Arts and Crafts movement, while **looking more seamless** like in the Modern style. **Strong lines** would be featured in the space, paired with oversized furniture.
- The main idea that sets this scheme apart is the **materials- natural materials enhancing the sustainability aspect would also lend to the design choices** with natural materials like cork, recycled/reclaimed wood, grasscloth, burlap, leather, and iron.
- The home would have a warm and comforting feeling from the natural materials, and would also give one the idea of **bringing the best of the outdoors in**.
- This scheme focuses on using the materials as a way to bring all parts of the home together, successfully taking in the **holistic** approach. This home will be **efficient** by not only the use of materials from a sustainability point, but also by using materials that are sound absorbing and creates privacy.
- All furniture, fixtures, equipment, and materials are chosen with **sustainability in mind** and is a combination of companies that are ecofriendly, materials that are sustainable, or both.



Color Palette



Flush Wood Door



White Oak



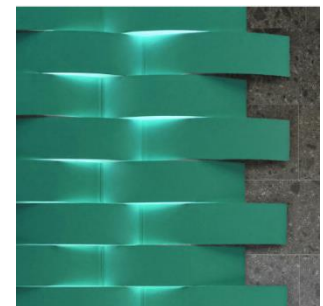
Leather Sofa



Textured Apron Sink



Cork Brick Wall

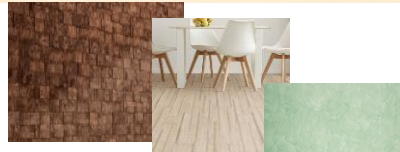


Acoustic Felt/ Light Panels

Sustainability Plan

In order to consciously build an environmentally friendly sustainable designs, there are certain key considerations that will be implemented into the built environment.

- Use sustainable materials or vendors that have an environmentally conscious mission statement that can be seen in their production.
- Use sustainable furniture or vendors that have an environmentally conscious mission statement that can be seen in their production.
- The South wall of the home will have a long facing exterior without many jets and niches in order to maximize daylight without heat.
- Recycling bins will be installed in the kitchen, making it easy for the client. A recycling center will be installed directly out of the dining room, providing storage for those recycled items once the bin is full, while being conveniently located for the family.
- A composting center will also be installed for the family to provide an area to compost leftovers, including leftovers from the gardening area.
- The home will use energy efficient appliances and lighting solutions.
- No/ low VOC paint will be used throughout the home to reduce toxins in the home and environment.
- Photovoltaic (Solar) Panels will be installed conspicuously and with finesse to provide a balance in energy that the home uses and produces.
- A rain barrel will be used to collect rain that will allow recycled water to be used to water plants.



Sustainable Materials



South Facing Wall



Composting



Photovoltaic Panels



Sustainable Furniture



Recycling Center/
Water Harvesting



Energy Efficient



Low/ No VOC Paint



Materials, Finishes, FF&E- Overall

Holistic and Efficient

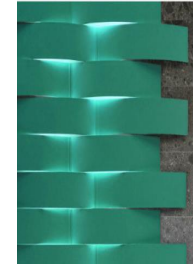
Strong Shapes and Sustainable Substance



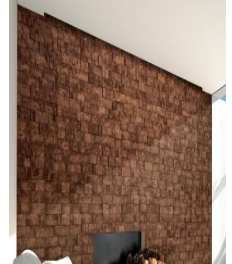
Overall Canned
Lights



Gypsum Board
Ceiling



Acoustic Felt/ Light Panels



Cork Brick Wall

Color Palette: Sherwin Williams Emerald Paint



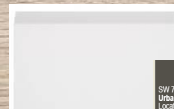
Flush Wood Door
Door Handles-
Walnut



Casement Windows



In-Law and Office Doors



Trim



Cork-Core
Wood Look Floors

Materials, Finishes, FF&E- Bathrooms

Holistic and Efficient

Strong Shapes and Sustainable Substance

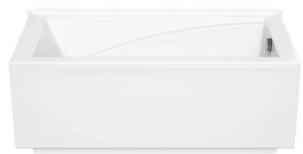
Shade Pockets



Tub Filler



Freestanding Tub-
Owner



Built In Tub-
Kid's Baths



Washlet Toilet

Brick Barrel Vault



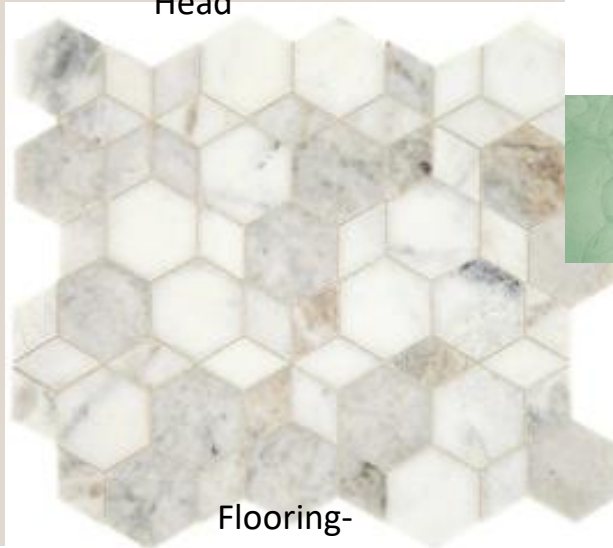
Pendants



Shower
Head



Limestone
Backsplash/ Wall
Tile



Flooring-
Limestone



Mirror With
Light and TV



Bathroom Light/ Vent/
Bluetooth Combo



Faucet



Copper Sink



Bio Glass Countertops (Backlit)



SW 7048
Urbane Bronze
Locator Number: 245-C7

Vanities

Materials, Finishes, FF&E- Kitchens

Holistic and Efficient

Strong Shapes and Sustainable Substance



Reclaimed Wood Backsplash



Baffles



Pendant



Indoor
Garden



Fridge & Freezer Panels-
Match Wall



Wine
Fridge



Double Ovens-
Triple Fast Heat



Textured Apron
Bar Sink



Coffee Maker



Heat, Chill, Sparkling Faucet



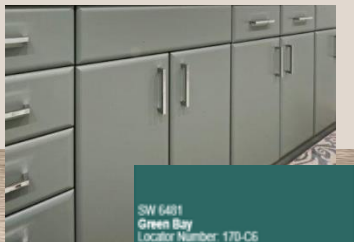
Sink Island Workstation



Hood Vent- Built In



Induction Cooktop



Cabinetry

Materials, Finishes, FF&E- Public Areas

Holistic and Efficient
Strong Shapes and Sustainable Substance



Living Room
Sectional



Coffee Table- Seagrass



Built In Media System



Paneled Wall



Brick Barrel Vault

Opposite Tray- Inset Ceiling



Grasscloth



Sconce



Chandelier



Entry Table



Limestone Floor
Inset



Cork Brick Wall

Office Desk-
Sit to Stand



Dining Chair-
Handwoven/ Teak



Dining Table
Live Edge



Swing Pendant-
Breakfast Nook



Breakfast Table



White Oak

Materials, Finishes, FF&E- Private Areas

Holistic and Efficient

Strong Shapes and Sustainable Substance



Pendants



Opposite Tray- Inset Ceiling



Nightstand-Blown Glass



Master Bed



In Law Sofa



In Law Dining Chair



In Law Dining Table



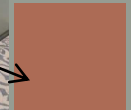
Side Table



In Law Chair



Kitchenette Cabinetry



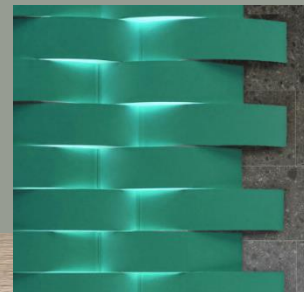
Bedroom Accent Ceilings- Combined With Tray Ceiling/ Lighting



Brittany's and Chris' Beds



Bedroom Chair or Bedroom Pouf



Acoustic Felt/ Light Panels



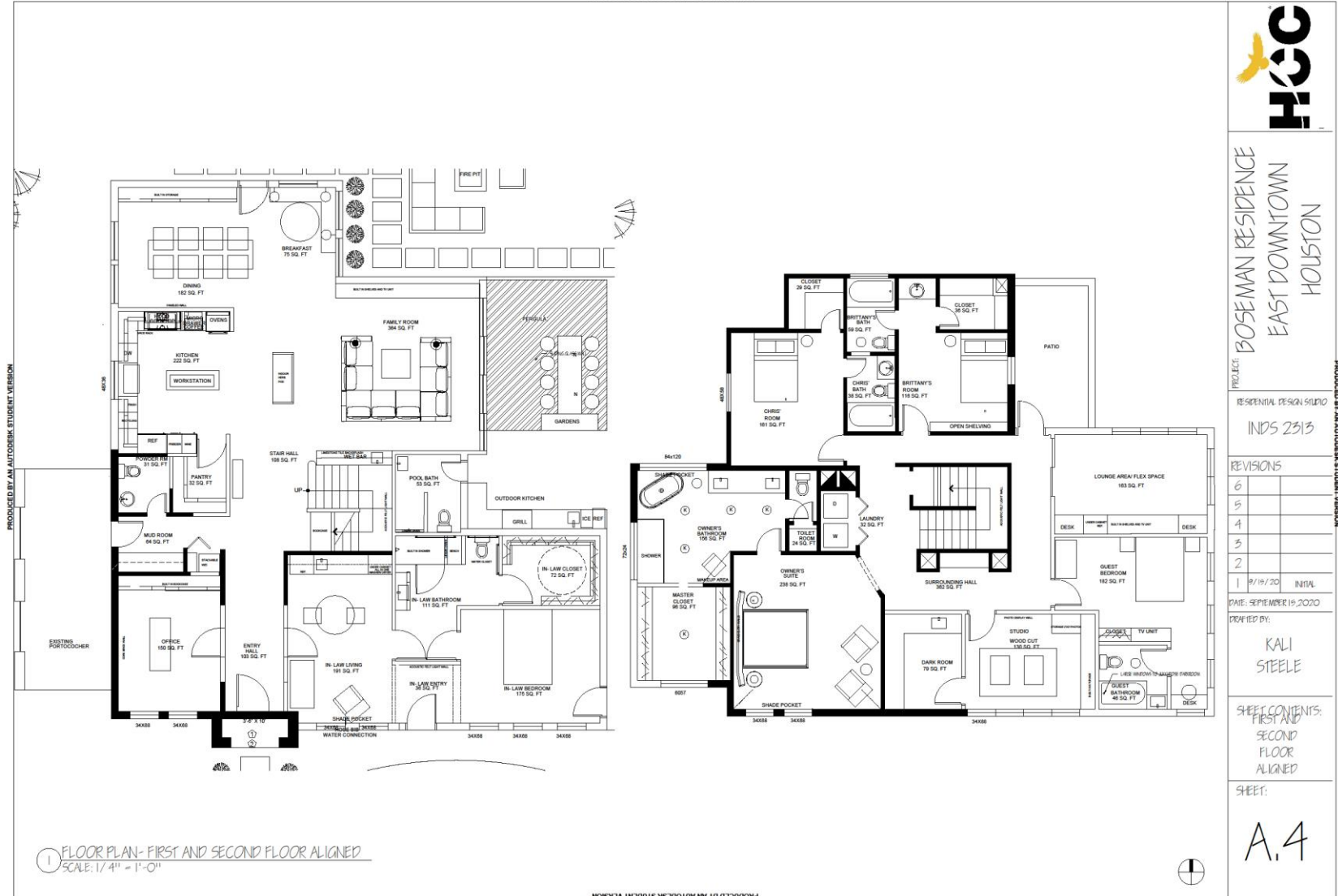
In-Law Bed

03

Final Floor Plans

Holistic and Efficient
Strong Shapes and Sustainable Substance

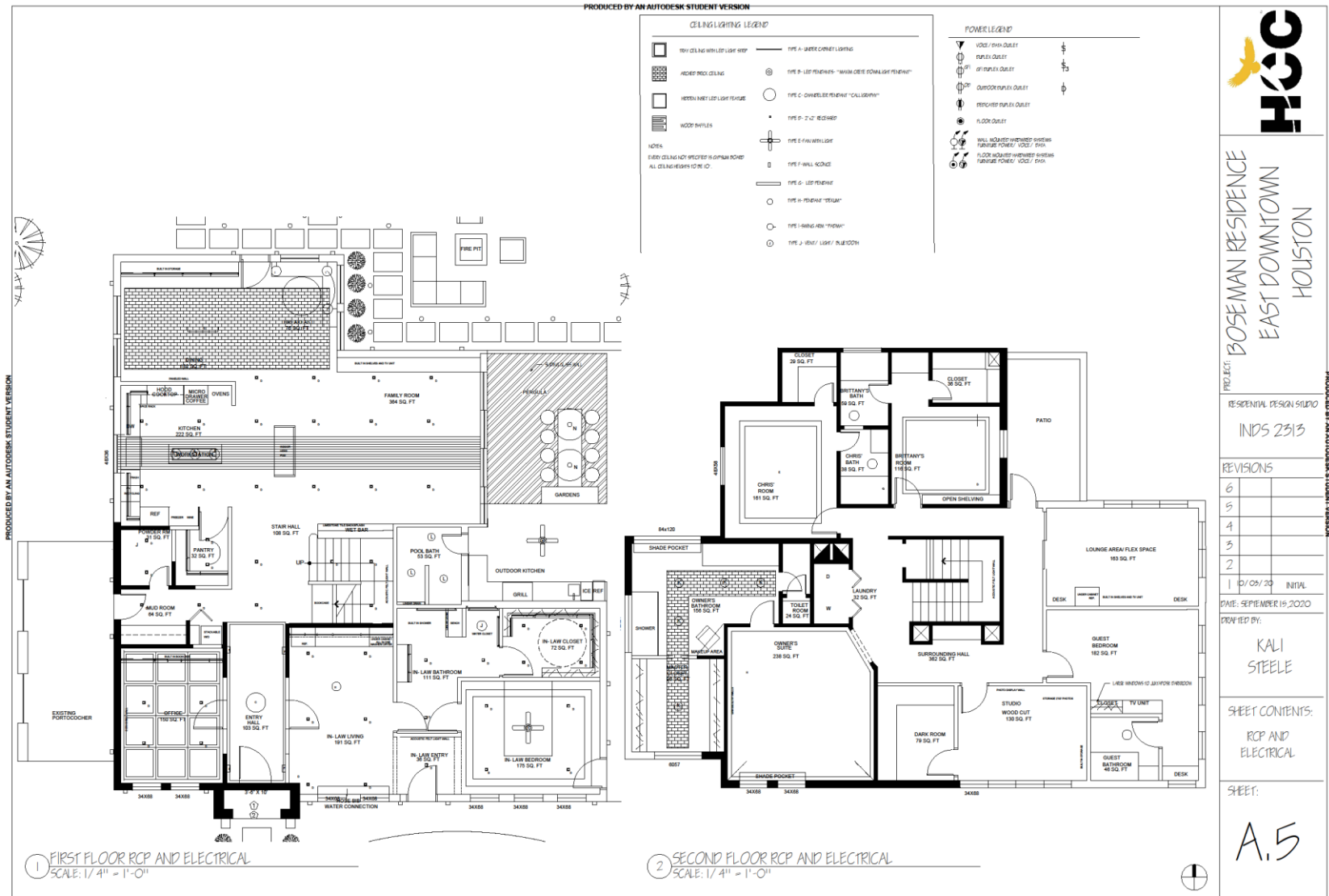
PRODUCED BY AN AUTODESK STUDENT VERSION



04

Reflected Ceiling Plan- Floor Plan

Holistic and Efficient
Strong Shapes and Sustainable Substance

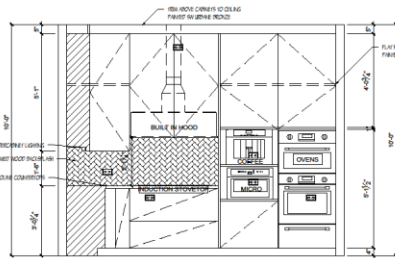


05

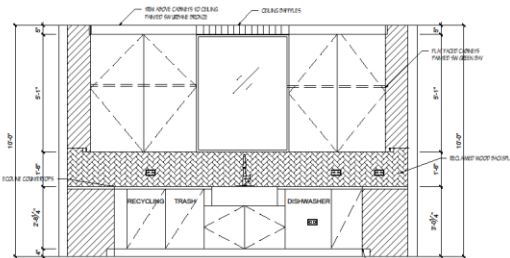
Elevations- Kitchen & Surrounding

Holistic and Efficient
Strong Shapes and Sustainable Substance

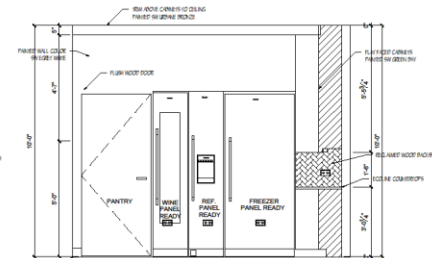
PRODUCED BY AN AUTODESK STUDENT VERSION



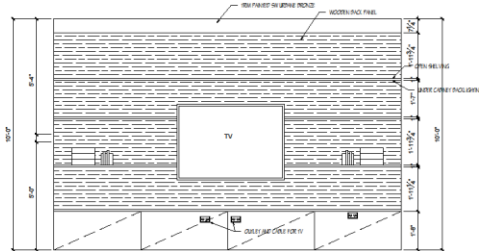
1 KITCHEN ELEVATION A
SCALE: 1/2" = 1'-0"



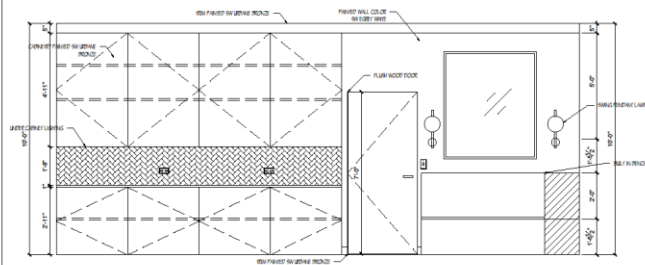
2 KITCHEN ELEVATION B
SCALE: 1/2" = 1'-0"



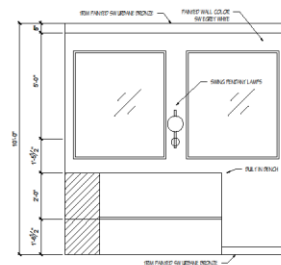
3 KITCHEN ELEVATION C
SCALE: 1/2" = 1'-0"



4 LIVING ELEVATION A
SCALE: 1/2" = 1'-0"



6 DINING ELEVATION A
SCALE: 1/2" = 1'-0"



7 DINING ELEVATION B
SCALE: 1/2" = 1'-0"



PROJECT: BOSEMAN RESIDENCE
EAST DOWNTOWN
HOUSTON

RESIDENTIAL DESIGN STUDIO
INDS 2313

REVISIONS

6		
5		
4		
3		
2		
1	10/05/20	INITIAL

DATE: OCTOBER 8, 2020

DRAWN BY:

KALI
STEELE

SHEET CONTENTS:
KITCHEN/
LIVING/
DINING
ELEVATIONS

SHEET:

A.6

PRODUCED BY AN AUTODESK STUDENT VERSION

PRODUCED BY AN AUTODESK STUDENT VERSION

PRODUCED BY AN AUTODESK STUDENT VERSION

Elevations- In-Law ADA Accessible Suite

Holistic and Efficient
Strong Shapes and Sustainable Substance

PRODUCED BY AN AUTODESK STUDENT VERSION

1 IN-LAW LIVING ELEVATION A
SCALE: 1/2" = 1'-0"

PRODUCED BY AN AUTODESK STUDENT VERSION

2 IN-LAW LIVING ELEVATION B
SCALE: 1/2" = 1'-0"

PRODUCED BY AN AUTODESK STUDENT VERSION

3 IN-LAW BATH ELEVATION A
SCALE: 1/2" = 1'-0"

PRODUCED BY AN AUTODESK STUDENT VERSION

4 IN-LAW BATH ELEVATION B
SCALE: 1/2" = 1'-0"

PRODUCED BY AN AUTODESK STUDENT VERSION

5 IN-LAW BEDROOM ELEVATION A
SCALE: 1/2" = 1'-0"

PRODUCED BY AN AUTODESK STUDENT VERSION

6 IN-LAW BEDROOM ELEVATION B
SCALE: 1/2" = 1'-0"

PROJECT: BOSEMAN RESIDENCE
EAST DOWNTOWN
HOUSTON

RESIDENTIAL DESIGN STUDIO
INDS 2313

REVISIONS	
6	
5	
4	
3	
2	
1	10/05/20 INITIAL

DATE: OCTOBER 8, 2020

DRAWN BY:
KALI STEELE

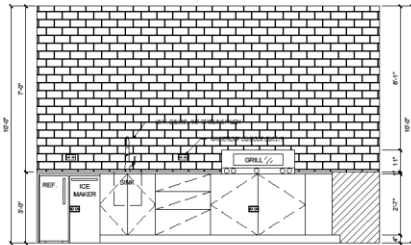
SHEET CONTENTS:
IN-LAW SUITE
ELEVATIONS

SHEET:
A.7

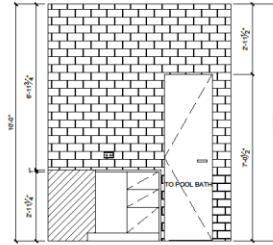
Elevations- Outdoor Living Area

Holistic and Efficient
Strong Shapes and Sustainable Substance

PRODUCED BY AN AUTODESK STUDENT VERSION



① OUTDOOR KITCHEN ELEVATION A
SCALE: 1/2" = 1'-0"



② OUTDOOR KITCHEN ELEVATION A
SCALE: 1/2" = 1'-0"

PRODUCED BY AN AUTODESK STUDENT VERSION



BOSEMAN RESIDENCE
EAST DOWNTOWN
HOUSTON

PROJ. NO.

RESIDENTIAL DESIGN STUDIO

INDS 2313

REVISIONS

6		
5		
4		
3		
2		

10/09/20 INITIAL

DATE: OCTOBER 8, 2020

DRAWN BY:

KALI
STEELE

SHEET CONTENTS:
OUTDOOR
ELEVATIONS

SHEET:

A.8

PRODUCED BY AN AUTODESK STUDENT VERSION

PRODUCED BY AN AUTODESK STUDENT VERSION

Exterior Site Plans

Holistic and Efficient
Strong Shapes and Sustainable Substance



Tree 1- "Fantastic" Avocado
Grows 15-30' Tall,
up to 20' Wide
Ripe in Fall



Tree 2- Peach Tree
Grows 5' high
Mini dwarf variety



Tree 3- Texas Ash Tree
Shading Tree



Bush 1- Lavender
Mosquito Repellant, Good Smell



Bush 2- Rosemary
Edible, Good Smell, Insect
Repellant



Bush 3- Lemon Grass
Around Pool, Mosquito Repellant

Outdoor- Exterior Materials

Holistic and Efficient
Strong Shapes and Sustainable Substance



Front Door
In White Oak



Windows-
In Bronze



Shutters
in White Oak



Expandable Doors



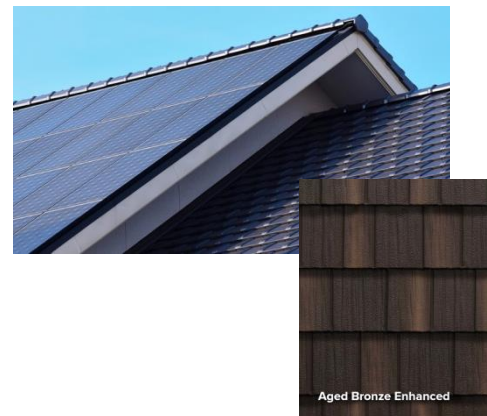
Porch Floor Covering-
Tile 24" x 36"



Outdoor Chicago Brick



Soffit-
Recycled Wood



Roof-
Solar Shingles and
Textured Steel Shake



Front Columns

Outdoors- Finishes & FF&E

Holistic and Efficient
Strong Shapes and Sustainable Substance



Fan



Heat, Chill,
Sparkling Faucet



Built-in Grill



Fridge



Safety/
Wall Lighting



Rain
Harvesting



Composting
Area



Exterior Covering



Teak Outdoor Kitchen



Patio Swivel
Chair



Patio Table

Pendants



Dining Seating

Dining Table



Outdoor Seating- Teak
Firepit



Path
Lighting



Outdoor Tables-
Teak



Pool



Pavers-
Tile 24" x 36"

Outdoor- Edible Garden

Holistic and Efficient
Strong Shapes and Sustainable Substance

Low Growers:



Cucumbers



Sweet Potatoes



Outdoor Garden Beds

Medium Growers:



Mint



Oregano



Basil



Peppers

Tall Growers:



Tomatoes



Okra



Green Beans



Squash



Chives