

Kali Steele

Fundamentals of Space Planning- INDS 1349

Project 3- Residential

Kevin Hamby

5/14/2020

Table of Contents:

Concept and Concept Statement	pg 2
Universal Planning Considerations for Master Suite	pg 2
For Kitchen	pg 2
5 Specification Sheets for ADA Kitchen Appliances	pg 3-5
5 Specification Sheets for Furniture Selections	pg 6-10
Process Papers:	pg 11-28
Prototypicals	pg 12-16
Prototypicals Revised	pg 17-21
Criteria Matrix	pg 22
Relationship Diagrams	pg 23
Bubble Diagrams	pg 24-25
Block Diagrams	pg 26-27
Furniture Diagram	pg 28
Scaled Model Photos	pg 29-33

Concept: Obliging Aging while Enjoying Downsizing

Concept Statement:

Marsha and Marty Payne need a home that is suitable for them to age-in-place. Careful considerations are made for them as they may need to adjust to life in a wheelchair in the future. The house will be designed ADA accessible, with special considerations in the kitchen and master suite to accommodate them both now and in the future. Their home will be planned to support Marsha and her love for photography through a workroom with lots of flat space to lay out photos, as well as deep flat storage for photos. Marty will not be left out- his love for gardening will be shown with lots of windows, and multiple access points to the outdoors. This downsizing will seem anything but cramped, with plenty of room for their two daughters and three grandchildren to come visit and stay comfortably.

Universal Planning Considerations for Master Suite:

1. The Master Suite has 4' walkways throughout.
2. Wheelchair accessibility on both sides of the bed.
3. Turn around radius of 5' and clear floor space of 48" x 30" is seen in the bedroom, closets, and bathroom areas.
4. Grab bars are planned for and notated at the shower and water closet
5. Foldable shower seat is planned for the zero-threshold shower
6. The water closet and shower area are separated and private, yet without doors, so to be easily maneuver for someone with limited accessibility.
7. Two sinks with clear space below.
8. Nonslip floor- 2" hexagon flooring throughout bathroom area.
9. Easy access into Master bedroom, while still giving privacy.
10. Same flooring in Master bedroom and closet as the rest of the house, so minimal transition pieces to slip on or roll over.

Universal Planning Considerations for Kitchen:

1. Kitchen has 4' walkways for easy pass through
2. Range and sink area is adjustable and can be raised up and down. Both have removable cabinets underneath. Range has knobs on the front for easy accessibility.
3. Hood vent above oven is under cabinet and ADA approved. Also has a light feature to see easily.
4. Pantry is linear, making it easily accessible for wheelchair use without having to go "Into" a room.
5. Oven is wall mounted above microwave. Microwave is mounted 15" AFF, and oven above that, making it under 36" for ADA approval.
6. Dishwasher is under-cabinet mounted at 15" AFF.
7. Refrigerator has the freezer on the bottom for easy accessibility.
8. 2 entry/exit ways for kitchen, making it easy to maneuver.
9. Light colored countertops help for easy vision of the border.
10. 9" toe kick throughout kitchen in case of future wheelchair use.

5 Spec sheets for Kitchen Appliances:

GDT225SGL/SSL

GE® Stainless Steel Interior Dishwasher with Hidden Controls

DIMENSIONS AND INSTALLATION INFORMATION (IN INCHES)

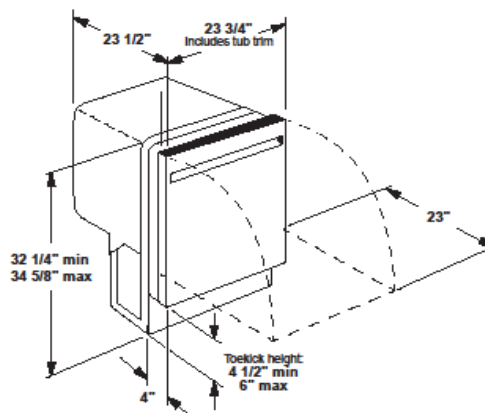
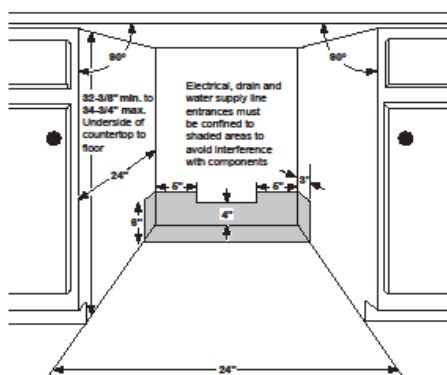
ELECTRICAL RATING

Voltage AC.....	120
-----------------	-----

Hertz.....60

Total connected load amperage.....8.9

For use on adequately wired 120-volt, 15-amp circuit having 2-wire service with a separate ground wire. This appliance must be grounded for safe operation.



For answers to your Monogram, GE Café® Series, GE Profile® Series or GE Appliances product questions, visit our website at geappliances.com or call GE Answer Center® Service, 800.626.2000.

Listed by
Underwriter
Laboratories

As an ENERGY STAR® partner, GE has determined that this product meets the ENERGY STAR guidelines for energy efficiency.

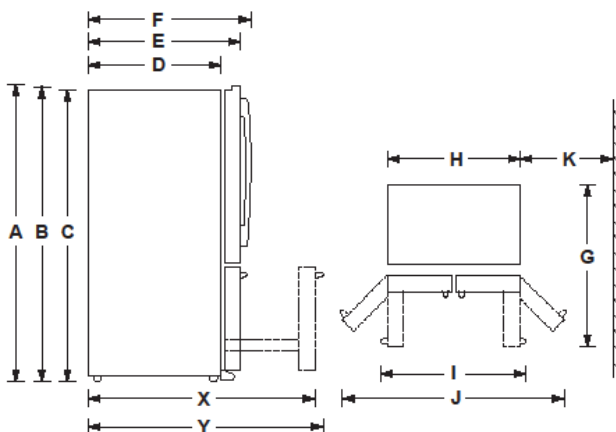
Specification Revised 2/18

PYD22KBL/KYN

GE Profile™ Series 22.1 Cu. Ft. Counter-Depth French-Door Refrigerator with Door In Door

DIMENSIONS AND INSTALLATION INFORMATION (IN INCHES)

Height to top of door (n.) A	70-1/2
Height to top of hinge (n.) B	63-7/8
Height to top of case (n.) C	69
Case depth without door (n.) D	24-3/8
Case depth less door handle (n.) E	29-3/4
Case depth with door handle (n.) F	31-1/4
Depth with fresh food door open 90° (n.) G	43-3/8
Width (n.) H	35-3/4
Width with door open 90° with door handle (n.) I	44-5/8
Width with doors open fully (n.) J	68
Min distance between side of case and wall, in either direction, to allow doors to open fully (n.) K	46-1/8
Depth with FZ door completely open (w/o handle) (n.) X	34-3/4
Depth with FZ door completely open (w/ handle) (n.) Y	46-1/4



For answers to your Monogram, GE Café™ Series, GE Profile® Series or GE Appliances product questions, visit our website at geappliances.com or call GE Answer Center® Service, 800.626.2000.

Listed by
Underwriters
Laboratories

Specification Created 01/20

PTS9000BN/SN

GE Profile™ 30" Built-In Convection Single Wall Oven

DIMENSIONS AND INSTALLATION INFORMATION

NOTE: Single wall ovens are NOT approved for stacking above or below another single wall oven.

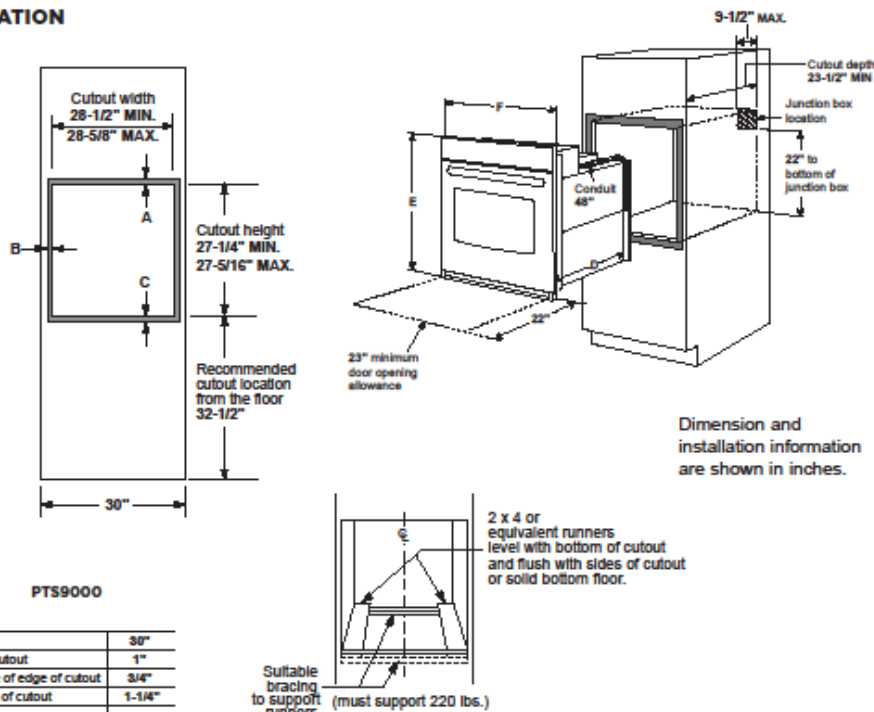
NOTE: Wall coverings, countertops and cabinets surrounding the wall oven must be able to withstand a temperature of up to 200°F (94°C).

NOTE: If the cabinet in which the wall oven is installed does not have a solid bottom, two braces or runners must be installed to support the weight of the oven. The runners and braces must support up to 220 lbs (99 kg).

NOTE: Door handle protrudes 3" from door face. Cabinets and drawers on adjacent 45° and 90° walls should be placed to avoid interference with the handle.

ATTENTION INSTALLER: Electric wall ovens are NOT approved for installation with a plug and receptacle. They must be hard wired into an approved junction box.

IMPORTANT: Before installing, consult installation instructions packed with product for current dimensional data.



KW RATING	
240V	4.2
208V	3.2
BREAKER SIZE	
240V	20 Amps
208V	20 Amps

PTS9000

Cabinet	30"
A - Overlap of oven at top of cutout	1"
B - Overlap of oven other side of edge of cutout	3/4"
C - Overlap of oven at bottom of cutout	1-1/4"
Oven	
D - Install depth	23-1/2"
E - Overall height with trim	28-5/8"
F - Overall width	28-3/4"



For answers to your Monogram, GE Café® Series, GE Profile® Series or GE Appliances product questions, visit our website at geappliances.com or call GE Answer Center® Service, 800.626.2000.



Listed by Underwriters Laboratories



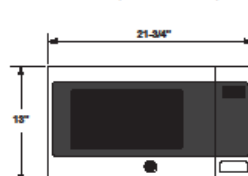
Specification Revised 5/20

PEB9159SJSS

GE Profile™ Series 1.5 Cu. Ft. Countertop Convection/Microwave Oven

DIMENSIONS AND INSTALLATION INFORMATION (IN INCHES)

EXTERIOR DIMENSIONS (IN INCHES)	
Height	13"
Width	21-3/4"
Depth	16"
Depth including bumpout	20"
Depth from back of case to front legs	13"



OPTIONAL ACCESSORY TRIM KITS FOR GE MICROWAVE OVENS (AVAILABLE AT ADDITIONAL COST)

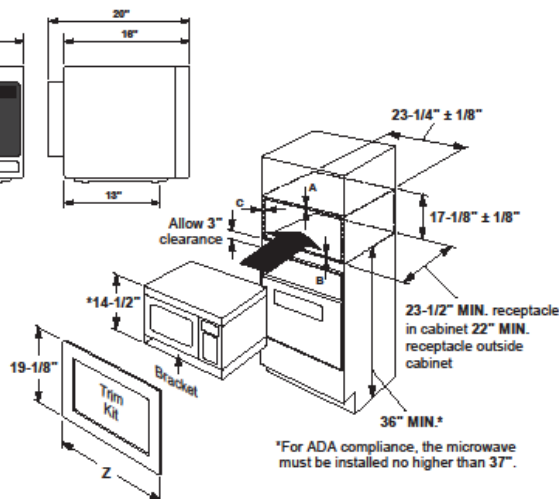
For a custom built-in appearance, these kits allow built-in installation of the countertop microwave oven into a wall or cabinet alone and are U.L. approved for installation over a GE single electric wall oven. These kits should not be installed over a gas wall oven.

ACCESSORY TRIM KITS	"Z"	MAX HEIGHT	TRIM KITS
30" Deluxe	29-3/4"	19-1/8"	JX9153SJ
27" Deluxe	26-7/8"	19-1/8"	JX9152SJ

NOTE: 120V, 60-cycle, grounded power receptacle location optional on back within cabinet opening.

INSTALLATION INFORMATION: This information is not intended to be used for installing unit described. Before installing, consult installation instructions packed with product/kit for current dimensional data.

*Height of product when installed with kit rail and bottom duct: 14-1/2"



CABINET OVERLAP REQUIREMENTS	30"	27"
A - Overlap of trim kit over top of cabinet	1"	1"
B - Overlap of trim kit over bottom of cabinet	1"	1"
C - Overlap of trim kit over sides of cabinet	3-5/16"	1-7/8"

NOTE: Allow an additional inch of clearance beyond trim kit frame on all sides.



Listed by Underwriters Laboratories

Specification Revised 8/16



For answers to your Monogram, GE Café® Series, GE Profile® Series or GE Appliances product questions, visit our website at geappliances.com or call GE Answer Center® Service, 800.626.2000.

30" Undercabinet Hood

300 Series – Stainless Steel DUH30152UC



BOSCH
Invented for life



DUH30152UC
Stainless Steel

Quickly and quietly clears the air of smoke and odors.

Features & Benefits

Allows you to adjust the performance of your hood to match the type of cooking.

Efficiently filters grease and other solid particles out of the extracted air.

Incandescent lighting illuminates the cooking area efficiently.

General Properties

Operating mode	Convertible: ducted / recirculating
Maximum CFM	280 CFM
Number of speed settings	3-stage
Motor location	Integrated motor in hood body
Number of lights	2
Bulb type	Incandescent
Total power of the lamps (W)	80 W
Damper included	Yes
Grease filter material	Aluminum
Grease filter type	Multilayer cassette

Technical Details

Volts (V)	120 V
Frequency (Hz)	60 Hz
Plug type	No plug

Dimensions & Weight

Overall appliance dimensions (width of canopy included) (HxWxD) (in.)	5" x 30" x 20"
Required distance above cooktop/range cooking surface	30" Electric / 30" Gas
Diameter of air duct (in.) top	7"
Diameter of air duct (in.) back	3 1/4" x 10" Rectangular
Net weight (lbs)	42 lbs

Accessories—Optional

Replacement charcoal filter	DHZ3002UC
-----------------------------	-----------



Accessories: To purchase Bosch accessories, cleaners & parts please visit www.bosch-home.com/us/store or call 1-800-944-2904 (Mon to Fri 5 am to 6 pm PST, Sat 6 am to 3 pm PST).
Notes: All height, width and depth dimensions are shown in inches. BSH reserves the absolute and unrestricted right to change product materials and specifications, at any time, without notice. Consult the product's Installation Instructions for final dimensional data and other details prior to making cutout.

Warranties: Please see Use & Care manual or Bosch website for statement of limited warranty.

For more information on our entire line of products, go to www.bosch-home.com/us or call 1-800-944-2904

© BSH Home Appliances Corporation. All rights reserved. Bosch is a registered trademark of Robert Bosch GmbH.

07/18

5 Spec Sheets for Furniture Pieces: (With notes about Accessibility choices)

1. Master Bedroom Bed

- Contrasting color around the edge for easy visibility
- Tufted/ fabric so wouldn't hurt if bumped into



W526K-HF - Barrett (King Bed)



As Shown: Fabric: Novum Dove. Nail Trim: Optional* #9 Black Silver Nails Outside Edge Of Headboard, Footboard and Rails. Finish: Supreme Walnut.*Optional charges may apply.

PRODUCT SUMMARY

Collection: Michael Weiss
 Bed Size: KING BED
 Features: #52 Nails Not Available.
 Shipping Speed: Approximately 6 weeks depending on fabric availability

DIMENSIONS (inches)

Overall: W 88 D 90 H 62.5
 Inside: W 78 D 81.5
 Headboard: H 62.5
 Footboard: H 18.5
 Side Rails: W 11.5 L 77.5
 Top of Side Rail to Floor: H 18.5
 Bottom of Side Rail to Floor: H 6.5
 Top of Support Slat to Floor: H 7.5

WOOD

Wood Species: Maple
 Finish Options: • Stain, Paint, Metallic Paint
 • Artisan, MIY
 • Premium Leaf

NAIL TRIM

Nails: Optional with Charge
 Placement: #9 or #54 only-Outside Edge & Inside Edge of Headboard, Footboard & Side Rails
 Nail Options: • #9, #52, #54
 • Premium

2. Sofa for Living Room

- Contrasting welt for easy visibility



641-1S - Barkley (Sofa)



As Shown: Fabric: Taschen Rawhide (no longer available); contrast welt in Novum Merigold (no longer available); throw pillows in Palatine Sunflower (no longer available). Chow Leg. Finish: Oiled Java.

PRODUCT SUMMARY

Collection: American Bungalow
 Features: Leg / Skirt Options: Block / Short Block / Metro / Short Metro / Mid Metro / Bun / Chow / Tapered / Turned / Edwardian / Cottage / 8" Dressmaker Skirt, Overall, Seat and Arm Heights Listed are Based on a 2.75" Leg Option
 Shipping Speed: Approximately 6 weeks depending on fabric availability

DIMENSIONS (inches)

Overall: W 79 D 37 H 37
 Inside: W 69 D 22 H 18
 Arm: H 22
 Seat: H 21

SEAT CUSHIONS

Construction: 8-Way Hand Tied
 Quantity & Seam: One Border-Welt
 Standard Fill: Feather Lux
 Fill Options: • Majestic, Relaxed Down, Spring Lux
 • Bliss Spring Down, Bliss Down

BACK PILLOWS

Quantity and Seam: Two Border-Welt
 Standard Fill: Feather Lux
 Fill Options: • Majestic Fiber
 • Blend Down, Bliss Comfort

3. Side Chair for Living Room- Customizable (Choose sofa color)

- Curved back so wouldn't hurt if hit the back*



V122-CH - Chloe (Chair)



As Shown: V122-CH. Fabric: Village Thunder. Finish: Moonstruck.

PRODUCT SUMMARY

Collection: Ease Custom
Shipping Speed: Approximately 6 weeks depending on fabric availability

DIMENSIONS (inches)

Overall: W 31.5 D 32 H 35
Inside: W 23 D 19.5 H 18.5
Arm: H 19
Seat: H 18.5

SEAT CUSHIONS

Quantity & Seam: One Border-Plain Seam
Standard Fill: Feather Lux
Fill Options: • Majestic, Relaxed Down
• Bliss Spring Down, Bliss Down, Spring Lux

BACK PILLOWS

Quantity and Seam: One Tight Button Back
Standard Fill: Poly Dacron

THROW PILLOWS

Quantity and Seam: One 9"x14" Kidney (square corner plain stitch)
Standard Fill: 95/5 Down
Options: • Majestic

4. Dining Table

- Legs more centered and end seats would be easily accessible

MADISON TRESTLE DINING TABLE

By Riverside Furniture



General Information



- Constructed of hardwood solid and Pecan veneer
" x 42" top extends to 100" x 42" with one 24" leaf inserted



FINISH DETAILS



Caramel

ADDITIONAL INFORMATION

Trestle Dining Table
76.00"W X 42.00"D X 30.00"H
Model #76050 271 lbs



5. Dining Chairs

- Outlined with contrasting wood for easy visibility
- End chairs have arm support for stability, or could be substituted with wheelchair on the end

Design House Luxury Living Dining End Chair



Hickory White Arm Chair in
Sonoma Finish w/Grey Linen
Fabric
W23 1/2 D19 H34 in. AH: 25 in.
SH: 19 in.
Item #17281

Design House Luxury Living Dining Side Chair



Hickory White Side Chair in
Sonoma Finish w/Grey Linen
Fabric
W20 1/2 D26 H38 in. SH: 19 in.
Item #17280

Process Papers: (Shown below)

-Prototypicals

Prototypicals- Revised

-Relationship Diagrams

-Criteria Matrix

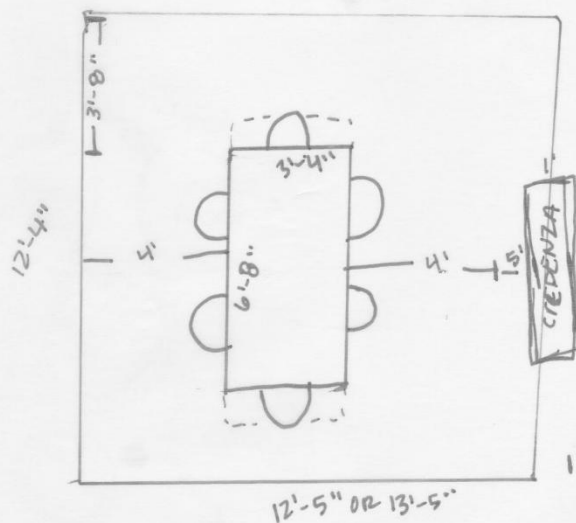
-Bubble Diagrams

-Block Diagrams

-Furniture Plan

DINING ROOM

1/4" SCALE

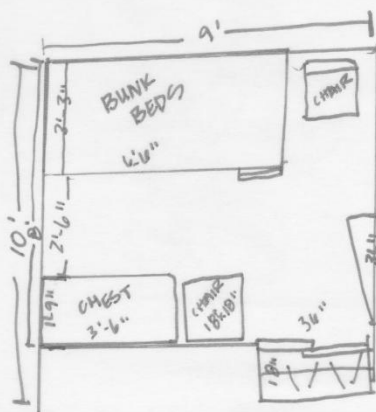


NOTES:

- 38" FOR ACCESS / PASSAGE BEHIND CHAIRS
- OPTION FOR 4' TO EAST WALL, OR 5' FOR FULL PASS THROUGH INTO ANOTHER ROOM.
- DOOR(S) CAN BE PLACED ON NORTH OR EAST OR WEST WALL, OR OPEN WALLS.
- 155 # TOTAL (OR 167 #)
- MULTIPLE WHEELCHAIR ALL CHAIRS.
- EXPANDABLE TABLE

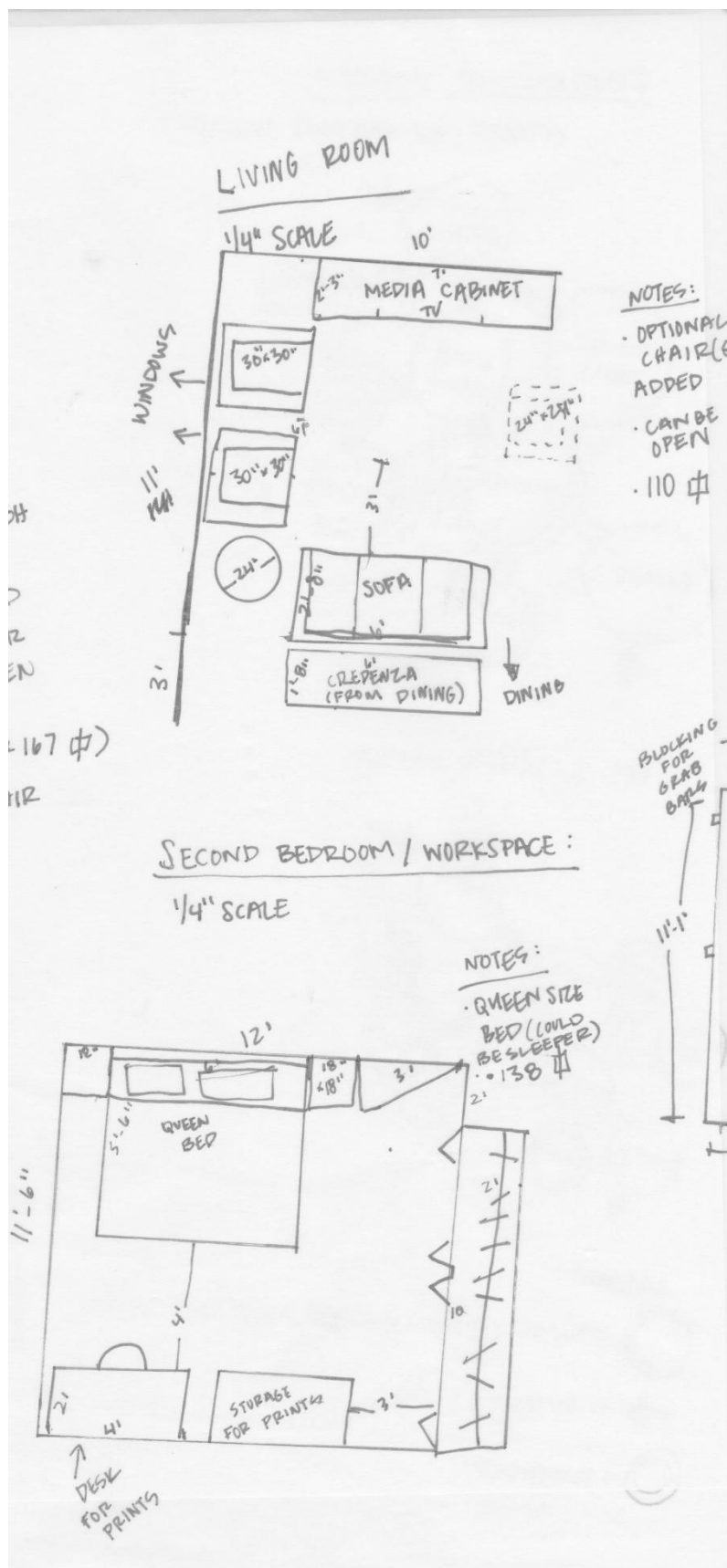
THIRD BEDROOM-KIDS

1/4" SCALE



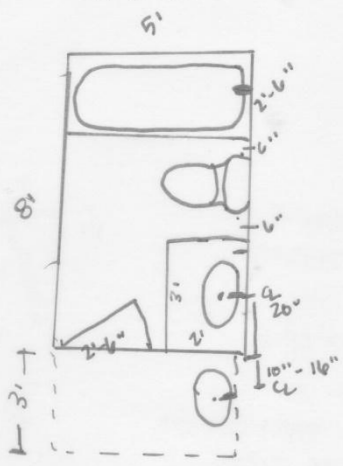
• 72 # (OR 90 # INCLUDING CLOSET)

11'-6"



GUEST BATHROOM

1/4" SCALE



NOTES:

- OPTIONAL CHAIR(S) ADDED
- CAN BE OPEN
- 110 #

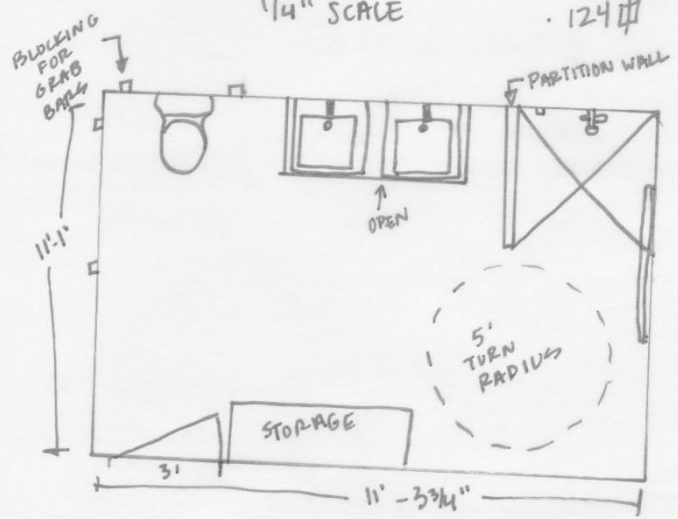
NOTES:

- PLUMBING ON ONE WALL
- CAN ENLARGE TO 11' x 5' ROOM FOR DOUBLE VANITY
- 40 # (OR 55 #)

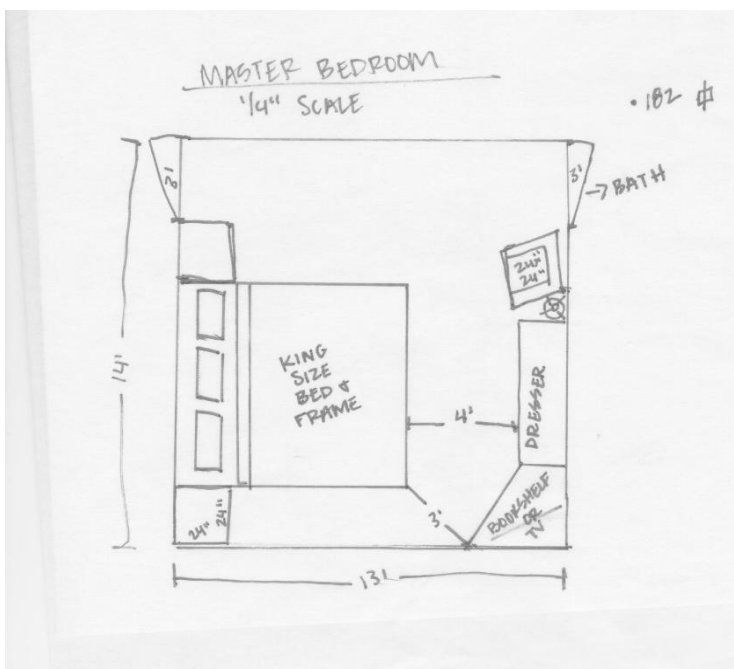
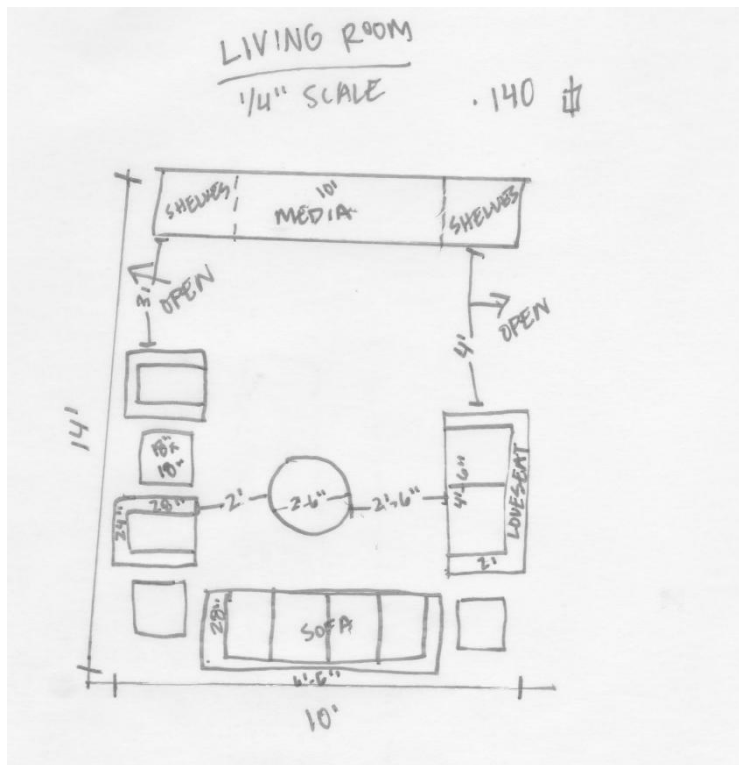
MASTER BATH:

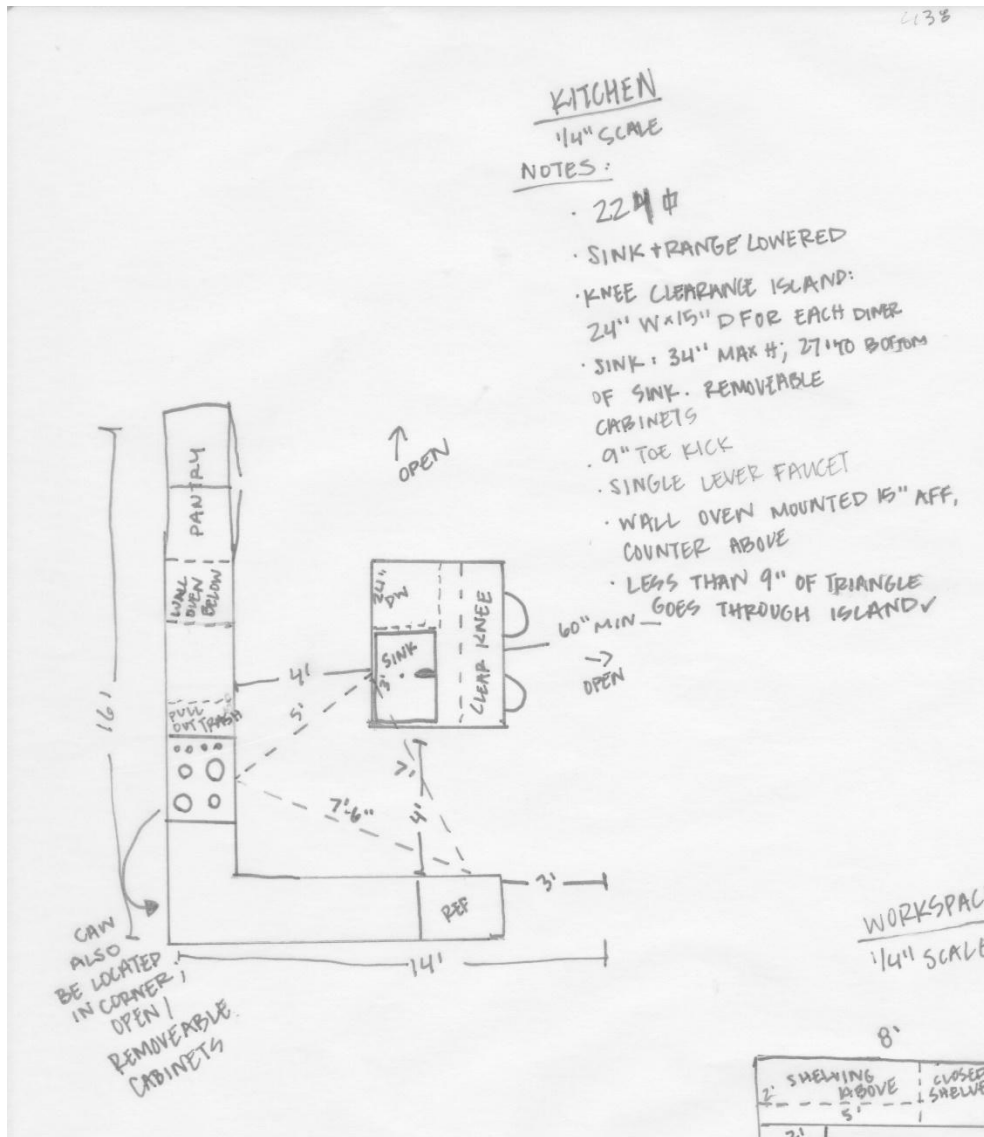
1/4" SCALE

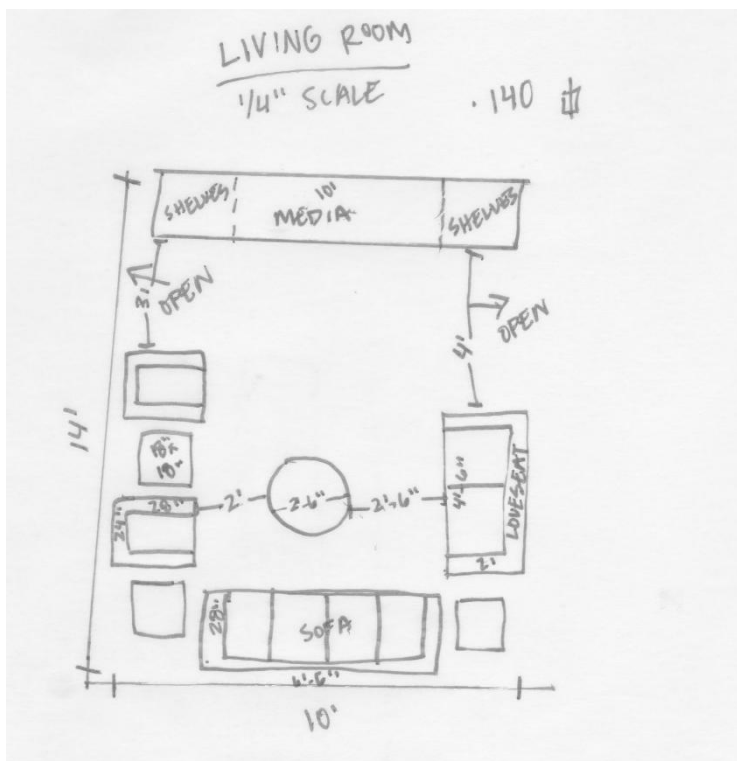
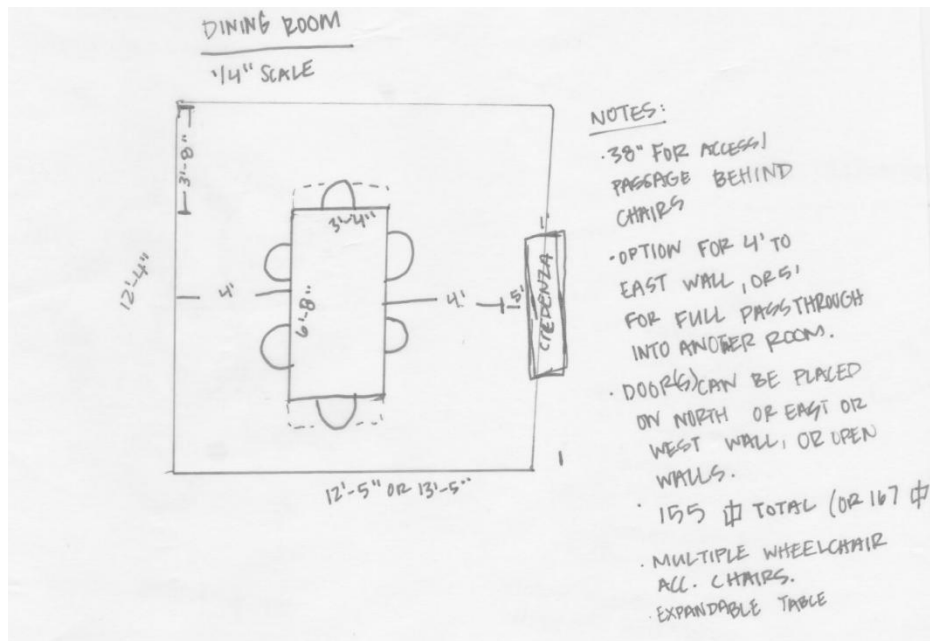
124 #

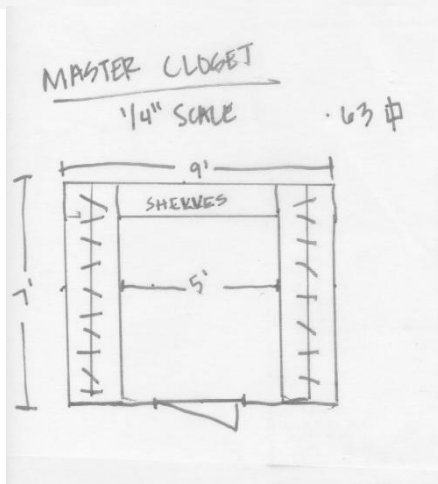
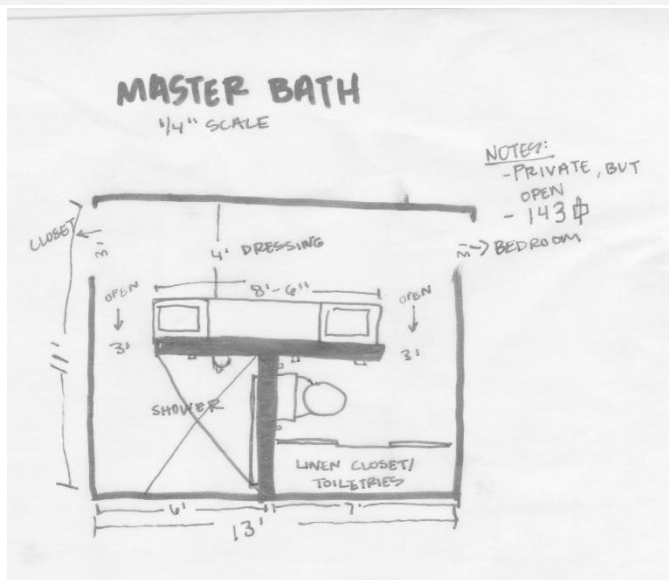
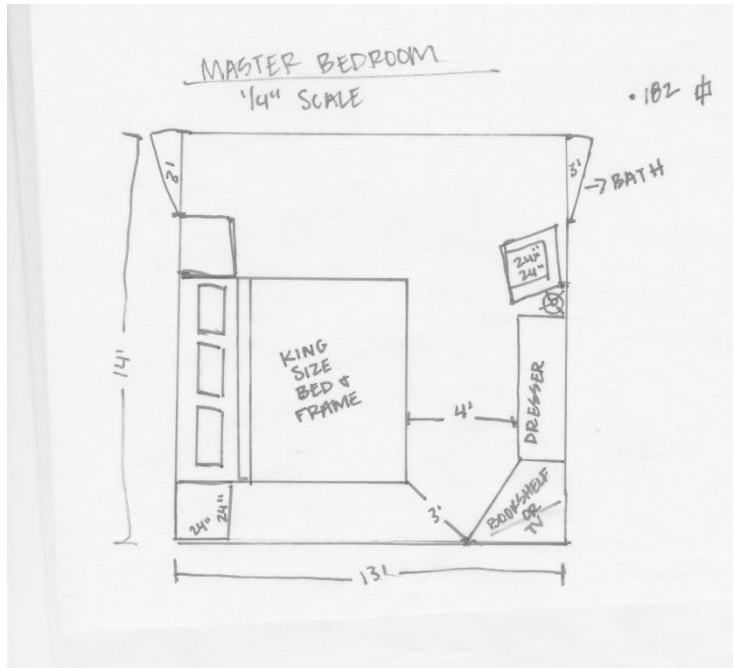


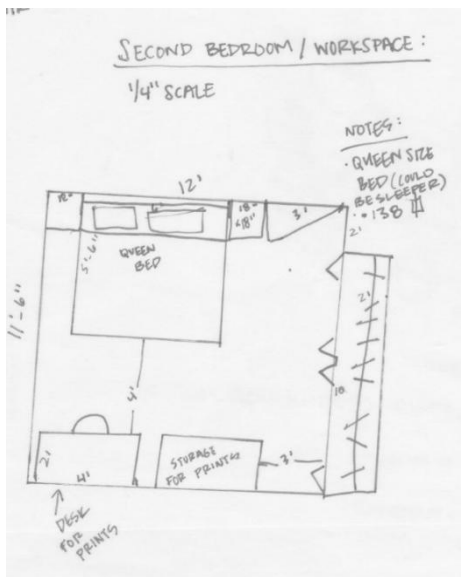
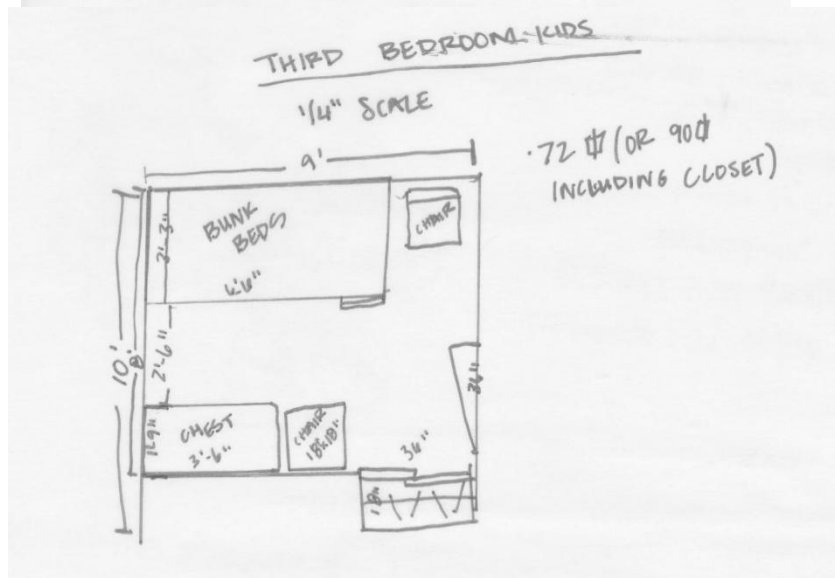
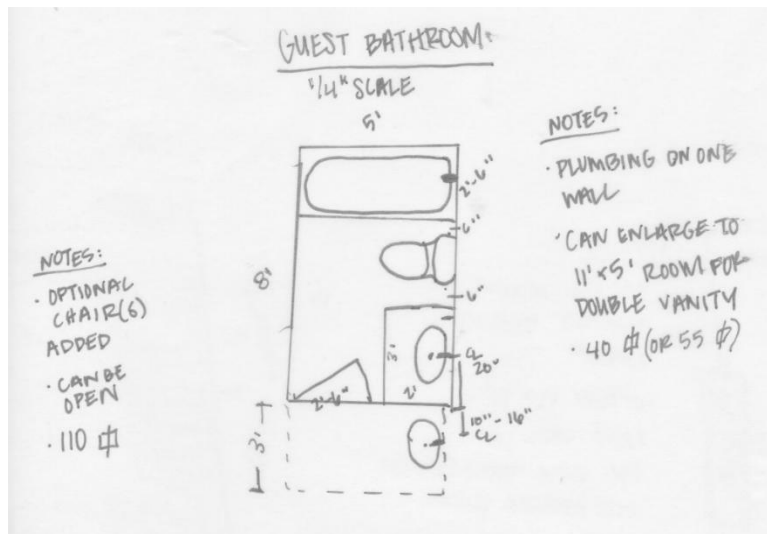
2)



PROTOTYPICALS (Revised):







Revised note: Get rid of storage for photos, and include dresser instead.

CRITERIA MATRIX:**CRITERIA MATRIX**

Key	Space	Sq. Footage	Adjacencies	Guest Access	Visual Privacy	Acoustical Privacy	Seating Requirements	Lighting Needs	Plumbing	Special Equipment
1	Entry/ Foyer	32	2,3	y						
2	Living Room	140	1,3	y			6 to 8	y		
3	Dining Room	155	1,4	y			6 to 8	y		
4	Kitchen	224	2,3	y				y	y	
5	Master Bedroom	182	6		y	y		y		
6	Master Bathroom	143	5		y	y			y	
7	Guest Bathroom	40	8,9	y					y	
8	2nd Bedroom	138	7,9	y		y		y		
9	3rd Bedroom- Kids	72	7,8	y		y		y		
10	Laundry Room	138			y					
11	Garage	n/a	4		y				y	
12	Workspace	80								
13	Master Closet	63	5,6		y					

Total Sq. Footage used: 1,407
 25% x 1407

Circulation: = 351

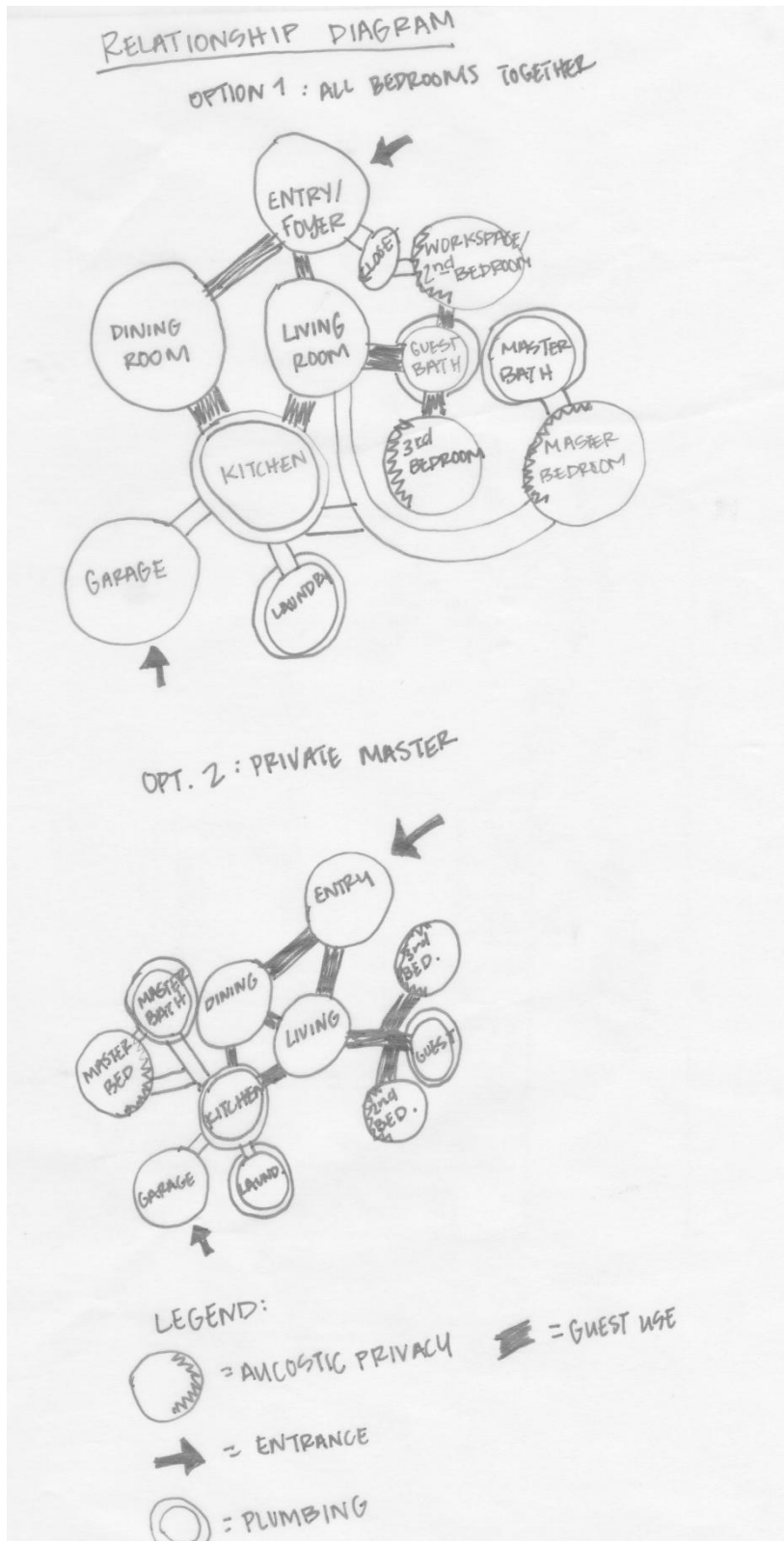
Total Square Footage: 1758

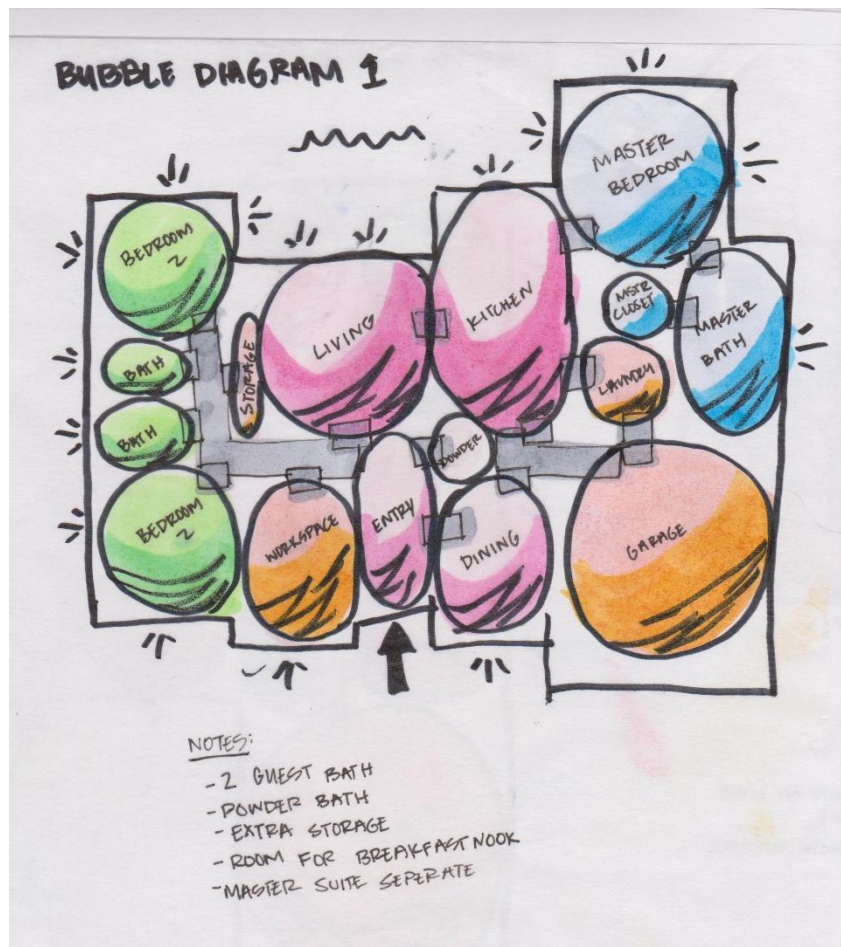
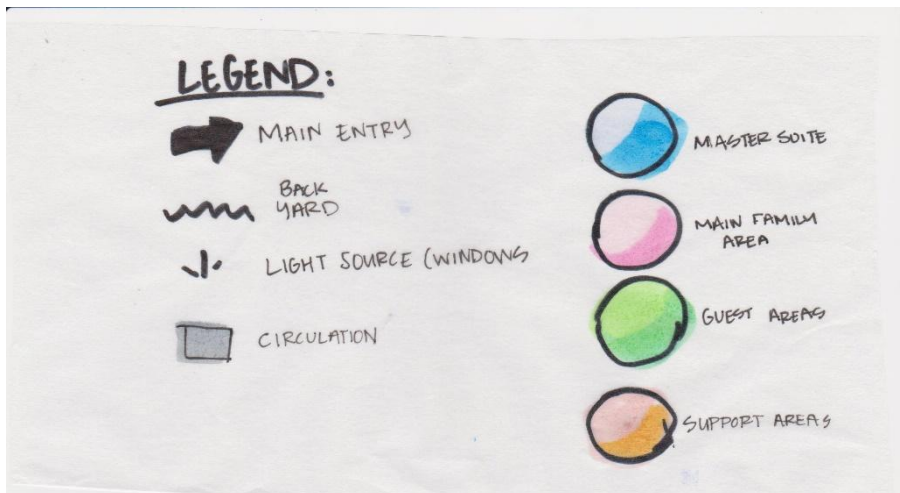
NOTES:

Legend: Y=Yes N=No

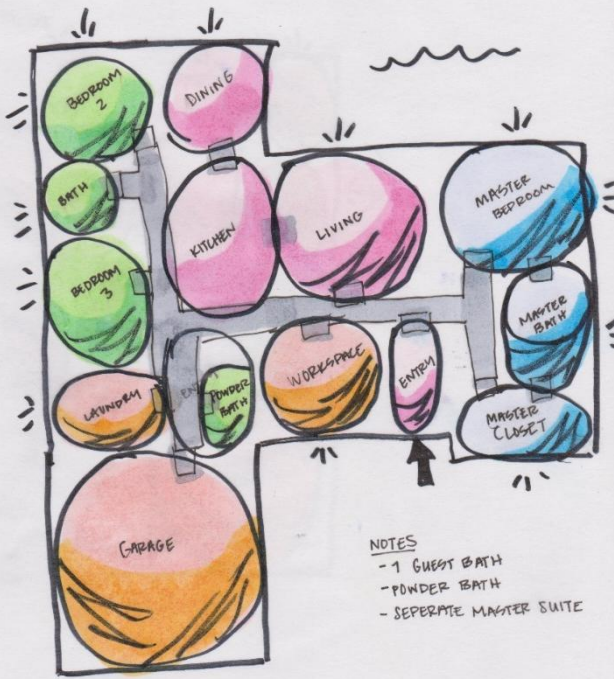
"Lighting needs" Refers to natural lighting priority

With extra space, can add powder bath, enlarge master for bigger seating area.

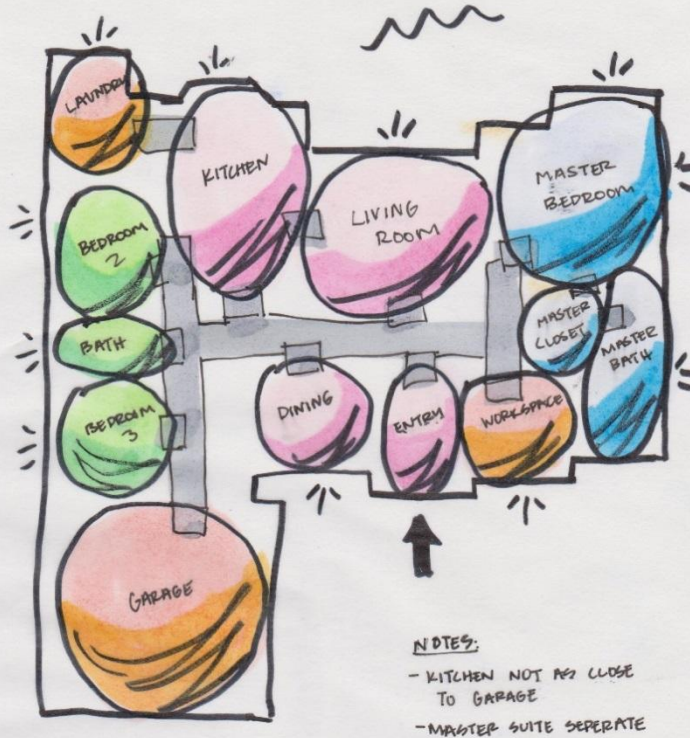
RELATIONSHIP DIAGRAM:

BUBBLE DIAGRAMS:

BUBBLE DIAGRAM 2

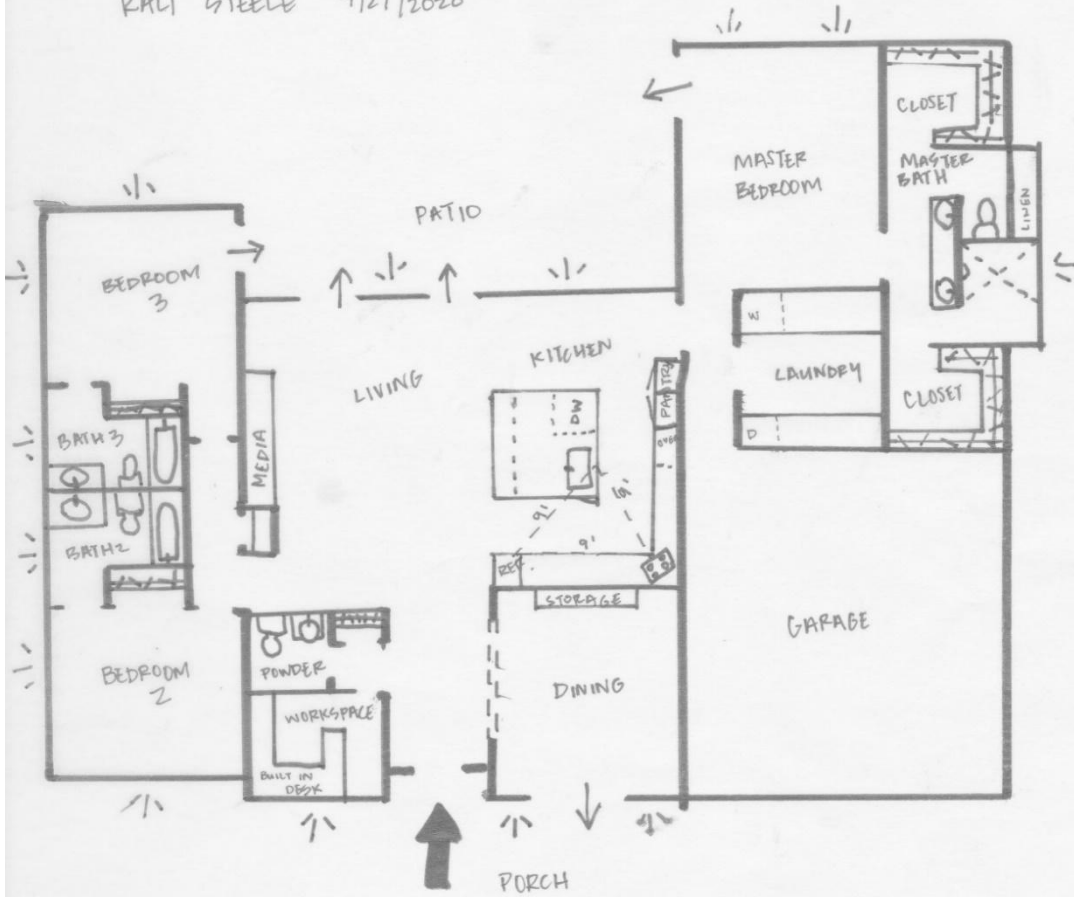


BUBBLE DIAGRAM 3



BLOCK DIAGRAMS:**BLOCK DIAGRAM 1**

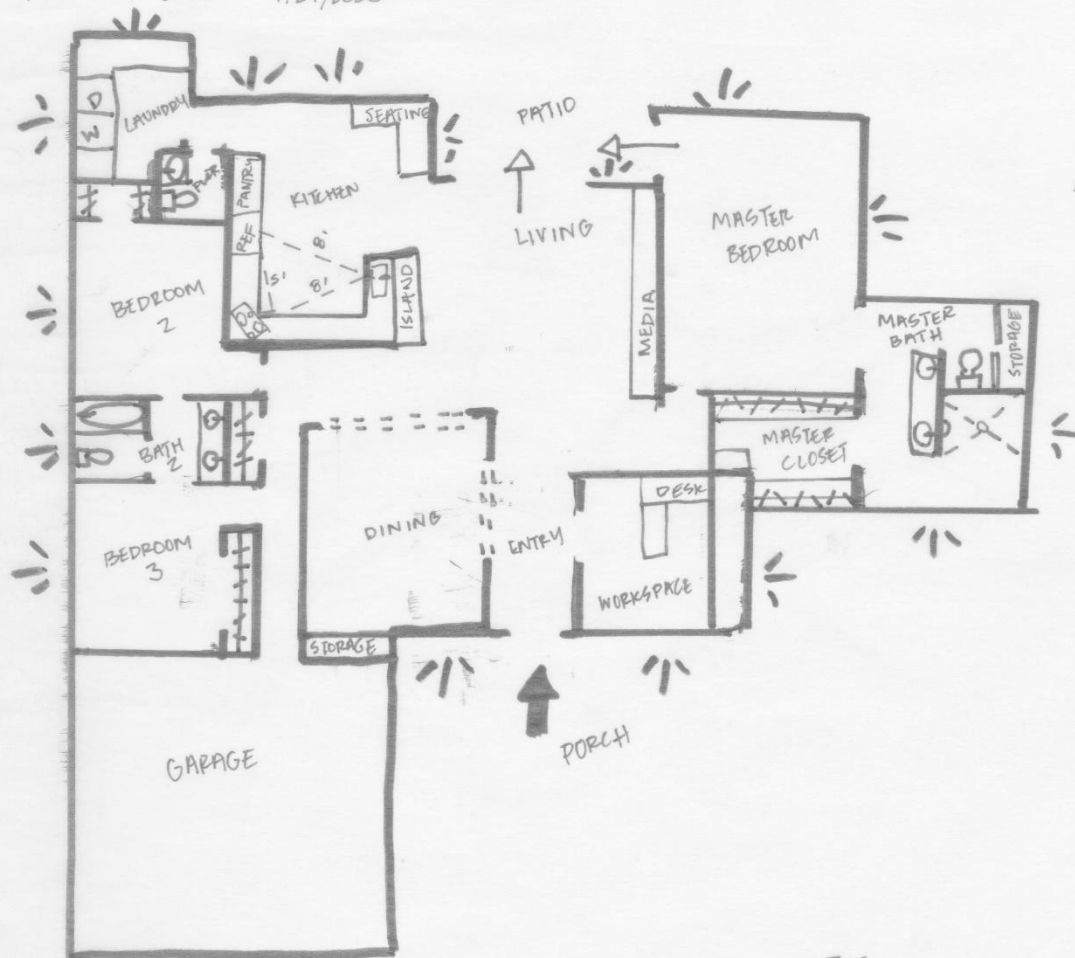
KALI STEELE 4/27/2020

**NOTES:**






- BUILT IN COMPONENTS
PLUMBING FIXTURES
SHOWN FOR REFERENCE.
- SQ. FT (NOT INCLUDING
GARAGE: 2,425 \pm)
- ROUGHLY 3/32 SCALE

BLOCK DIAGRAM 2

KALI STEELE 4/27/2020



LEGEND:

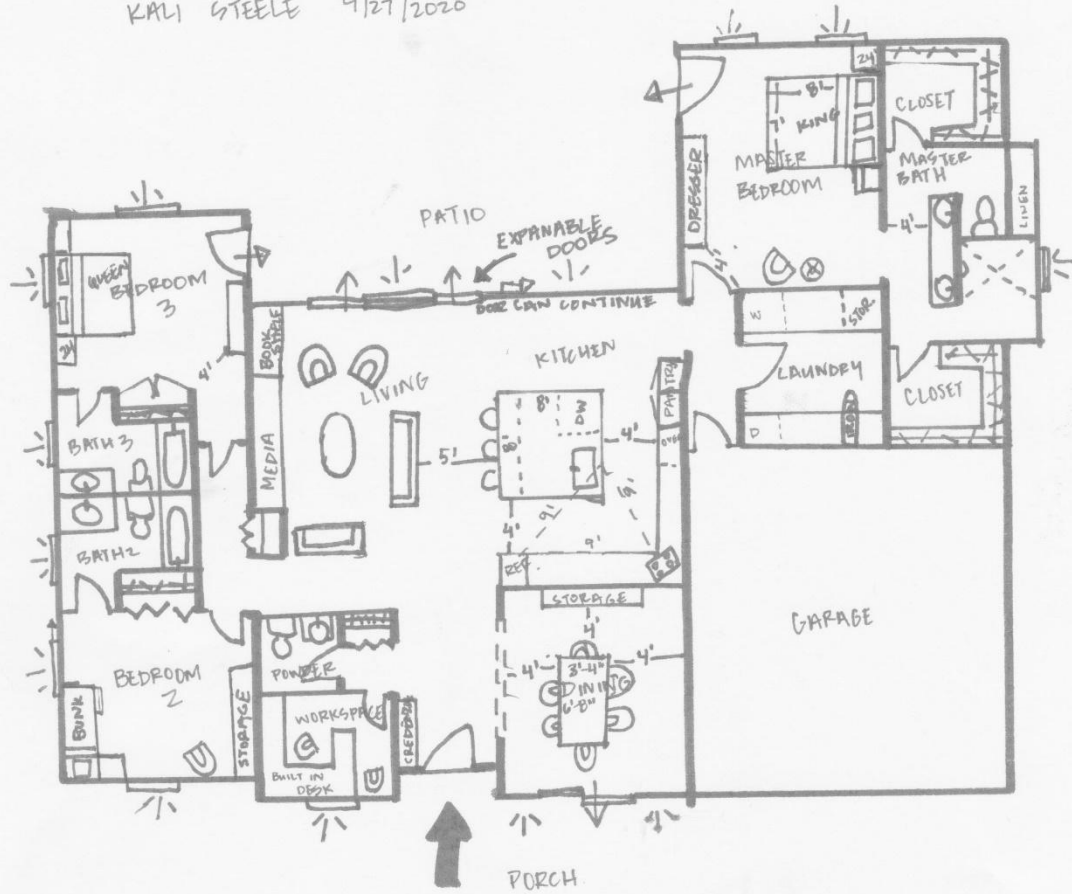
-  MAIN ENTRANCE
-  LIGHT (WINDOW)
-  ADDITIONAL ENTER/EXIT
-  Cased opening
-  CLOSET

NOTES:

- SCALE ROUGHLY 1"=0"
- SHARED BATH FOR GUESTS
- SHARED MASTER CLOSET
- BUILT-INS + PLUMBING
FIXTURES SHOWN
- 2,522 SF NOT INCLUDED
GARAGE

FURNITURE PLAN:

FURNITURE PLAN
FROM:
BLOCK DIAGRAM 1
KALI STEELE 4/27/2020

NOTES:

- BUILT IN COMPONENTS
PLUMBING FIXTURES
SHOWN FOR REFERENCE
- SQ. FT (NOT INCLUDING
GARAGE): 2,425 \pm
- ROUGHLY 3/32 SCALE
- DESIGNED ACCORDING TO
PROTOTYPICALS

Scaled Model- Photos

